



**PROVEN.**



# Proven. Today and into the Future

ANNUAL REPORT '08-'09





Bruce Barker

## LETTER FROM THE CVTC PRESIDENT

Welcome to the 2008-09 edition of the Chippewa Valley Technical College and Foundation Annual Report. I'm sure you'll find it interesting and informative.

Often we hear the old adages, "There are no guarantees in life," or "Nothing is a sure thing." This past year certainly confirmed the truth of both statements. Our nation weathered a housing crisis, a credit crisis, skyrocketing energy costs, and the worst recession in 60 years. Fortune 500 companies declared bankruptcy, major financial institutions merged or disappeared, and our government became a major investor in the auto industries.

As our nation looks for answers, it is important to remember that education is the key to economic recovery, economic growth, and economic prosperity. Education is the answer for a laid-off worker trying to start a new career. Education is the answer for any youth trying to enter today's difficult job market. Education is the answer for business owners trying to survive by upgrading the skills and productivity of their workforce.

Education is the answer and CVTC is the place. CVTC has a long, proven history of providing our students with the best education available. CVTC has consistently proven our ability to retrain and re-skill displaced workers. We currently are working with Workforce Development and other governmental agencies to help our local residents find new careers. CVTC also contracts with over 150 local businesses and industries, providing proven training to employees needing to improve job skills.

We are successful because all of our instructors are required to have actual field experience that they bring into the classroom. We strive to provide learning environments modeled after real life job sites. Most importantly, we realize that business and industry needs are our opportunities . . . whether that means retraining incumbent workers, or ensuring the skill level of new graduates.

During these difficult times we need to invest in our future. We need to invest in education. We need to wisely invest in those who can deliver.

While there may not be any guarantees or sure things in life, CVTC has delivered in the past, and I'm confident that we will continue to provide proven results in the future.

Bruce A. Barker, President  
Chippewa Valley Technical College

### About the College

Chippewa Valley Technical College (CVTC) serves the residents of west-central Wisconsin with seven campuses and centers. Here at CVTC, students of all ages and backgrounds prepare for futures in business, health, manufacturing, agriculture, personal and consumer occupations, and public safety, along with careers in mechanics, transportation, and construction.

Three CVTC campuses are located in Eau Claire, with regional campuses and centers in Chippewa Falls, Menomonie, River Falls and Neillsville.

### MISSION

Chippewa Valley Technical College delivers superior, progressive technical education, which improves the lives of students, meets the workforce needs of the region, and strengthens the larger community.

### VISION

Chippewa Valley Technical College will be a dynamic community partner dedicated to adding value through learning and student success.



**PROVEN.**

# LETTER FROM THE CVTC FOUNDATION EXECUTIVE VICE PRESIDENT

“In ordinary life we hardly realize that we receive a great deal more than we give, and that it is only with gratitude that life becomes rich.”

— Dietrich Bonhoeffer

As I enter the last few months of my professional career at Chippewa Valley Technical College and reflect on my service as Executive Vice President of the Chippewa Valley Technical College Foundation for the past 13 years, I am fully aware of the truth of the above quote.

It is with heartfelt gratitude that I thank you:

- The many donors who believe in the goals and values of CVTC and graciously give of their wealth.
- CVTC Alumni, who are the product of all that is good about CVTC and the difference they make as the skilled workers of the region.
- The faculty and staff for their commitment of service and gifts to provide scholarships and funds to ensure success for all our students.

Words cannot adequately express the difference you have made in making CVTC an outstanding college.

Thank you!

Please join me in welcoming Heidi Fisher as the new CVTC Foundation and Alumni Association Director. We enjoy working together to ensure a smooth transition in leadership. You'll find that Heidi shares my enthusiasm for CVTC and is fully aware of all the College has done and can do for the Chippewa Valley.



Diane Pavelski, Executive Vice President  
Chippewa Valley Technical College Foundation



Diane Pavelski

## CVTC's New Brand and Promise

This year CVTC embarked on an important mission...identifying the “brand” of the College. The brand, while often mistaken for merely a slogan, is much more than that. It’s the College’s promise to the community, to its students. It is what people can count on when they come to CVTC.

The College hired Interact Communications, a Wisconsin-based company that works with two-year colleges nationally on marketing and communications. After many focus groups, surveys, and more focus groups, the company presented what is a compilation of the community’s core perceptions of CVTC. As Dr. Pamela Cox-Otto, CEO of Interact, puts it, “Your community turns to you when it needs more than promises, it needs results...every time. To your communities you are education, proven.” *Proven.* is the brand that CVTC will now use in its marketing and outreach.

College President Bruce Barker noted that *Proven.* also allows individual divisions within the College the freedom to promote their own services while still using the core brand. Examples include:

- Business and Industry – *Proven. Impact*
- Foundation – *Proven. Investment*
- High School Recruiting – *What You Want. Proven.*
- Adult Recruiting – *Proven. to Work*

The College has a “proven” history of community focus and is always looking for ways to improve the service it offers its communities and its people. Says Barker, “*Proven.* is our promise to keep our focus on education and deliver the results our communities need.”

## TABLE OF CONTENTS

Letter from CVTC President. . . . .	1	Joe Hegge Retires. . . . .	11
Letter from CVTC Foundation Executive Vice President . . . . .	2	New Leadership. . . . .	12
Letter from CVTC Foundation Board Chair. . . . .	3	Developing Leadership. . . . .	12
Letter from CVTC Foundation and Alumni Association Director. . . . .	4	A Measure of Quality. . . . .	13
Learning Resource Center. . . . .	5	Community Receives Dental Benefits. . . . .	14
Barber/Cosmetology Program Facilities . . . . .	6	Top Teachers. . . . .	15-16
Student Commons. . . . .	6	Distinguished Alumnus. . . . .	17
Energy Education Center. . . . .	7	Spring Gala . . . . .	17
Donors Recognize Teachers' Excellence. . . . .	8	Alumni Scholarship Recipient . . . . .	18
Another Neighbor at Nanorite. . . . .	8	Scholarships Awarded . . . . .	19-20
Steps to Success. . . . .	9	Thank You Donors . . . . .	21-24
COMPASS™ Assessment. . . . .	10	CVTC Financials . . . . .	25
		CVTC Foundation Financials . . . . .	26
		Ways to Give Gifts . . . . .	Back Cover

# PROVEN.

Investment



Dan Ostermann

CVTC Board of Trustees: Gary A. Mitchell, Vice Chairperson, Employer, Withee; Gary R. Brummeyer, Chairperson, Additional Member, Menomonie; Gwen M. Southard-Schuppel, Employee, Eau Claire; Judith A. Kucera, Additional Member, Eau Claire; Cheryl L. Gullicksrud, School District Administrator, Eleva; Larry B. Hagness, Treasurer, Additional Member, Durand; Colleen A. Bates, Elected Official, Eau Claire; Ramona J. Mathews, Secretary, Employee, Eau Claire; and Francis R. Bucheger, Employer, Jim Falls

## About the District Board

Chippewa Valley Technical College has an appointed board consisting of nine members who serve three-year staggered terms. Each year three members are appointed by a committee consisting of the county board chairpersons of the counties belonging to the CVTC District. District boards are comprised of two employers, two employees, three additional members, one school district administrator, and one local elected official.

## CVTC FOUNDATION

### LETTER FROM THE CVTC FOUNDATION BOARD CHAIR

It has been an honor to Chair the Chippewa Valley Technical College Foundation Board over the past year. Reflecting, we have expanded our mission, met increasing student need, and welcomed a new director. These changes result in CVTC's mission being met and exceeded on a daily basis. This is facilitated and supported through the gracious and visionary support of our donors and businesses. Each recognizes the impact of the CVTC mission.

There are no boundaries to the capability of CVTC. Generous and innovative private gifts have helped to support student scholarships, recognize the excellence in teaching at our College, and provided funding for students whose educations may be interrupted, as a result of changing personal situations. You will hear a common theme through the 2008-09 annual report; quite simply, our history is proven, and as a result, our future is bright.

Your gifts can make a difference in the present and in the future. The return on investment in CVTC is strong. A single gift can go on perpetually serving many purposes, touching many people, and benefiting and enriching many lives. I hope you visit one of our campuses and see your gifts in action. Seeing the College first hand allows you to witness the ripple effect of your support.

As the CVTC Foundation moves forward in partnership with you and the College, we continue to explore new opportunities for discovery, creativity, and service to our communities, individuals, and workforce. We invite you to share your ideas and goals, and to expect the highest level of accountability and stewardship. We remain sincerely grateful for your support. Thank you.



Daniel M. Ostermann, Chair  
Chippewa Valley Technical College Foundation



Heidi Fisher

CVTC Foundation Board: (front row) Debbie Duncanson, CVTC Foundation Assistant; Melissa L. Ostertag, Ostertag Orthodontics LLC; Connie Holden Peterson, CVTC Alumni Association President-Elect; Dr. Leland R. Mayer, Luther Midelfort; Diane Pavelski, CVTC Foundation Executive Vice President; Roy M. Fuerstenberg, Documation LLC; Susan M. Kumferman, CVTC District Board Member; Bruce Barker, CVTC President; (Middle row) Paula S. Kimblin, Xcel Energy; Wes G. Westphal, Indianhead Warehouse Corporation; Dan R. Market, Market & Johnson, Inc., CVTC Foundation Vice Chair; Mel D. Jahnke, Imagineering Computer Consultants, CVTC Foundation Secretary; Daniel M. Ostermann, M&I Bank, CVTC Foundation Chair; Gerald T. Salter, Trubilt Auto Body; (back row) Ramona J. Mathews, CVTC Alumni Association President; Darcy Way, CVTC Development Specialist; Michael J. Berg, Ayres Associates; Kirk Moist, CVTC Foundation Assistant Treasurer; Jason R. Vance, Ken Vance Motors, CVTC Foundation Treasurer; Drew J. Ryberg, Ryberg & Happe S.C.; and Charles M. Grossklaus, RCU. (missing from photo) Gerald H. Jacobson, Northwestern Bank; Ron Keys, CVTC Foundation Advisory Committee Chair.

## LETTER FROM THE CVTC FOUNDATION AND ALUMNI ASSOCIATION DIRECTOR

CVTC has a proven history of quality education and service. The Foundation and Alumni Association have had a proven impact on CVTC in the past, and will be even more crucial to the College's continued success in the future. As the economic turbulence of the past years has affected each of us, CVTC's mission of preparing students for careers and enhancing the economic health of our region is increasingly important. One way to forward the mission of the College and help our communities is through gifts to the Foundation. Your support benefits our students and our workforce.

In the coming year, we look to set forth innovative ways to connect with our students, alumni, and community members; increase the funding in support of students, innovation and technology; and connect with those who support our mission through financial and volunteer support. I look forward to being part of that growth and innovation.

I thank Diane Pavelski for her years of service establishing a strong CVTC Foundation. I thank you for your past and future investments as we prepare our students for the future.

Heidi L. Fisher, Director  
Chippewa Valley Technical College Foundation and Alumni Association

### About the Foundation

The mission of the CVTC Foundation is to support the mission and values of Chippewa Valley Technical College through the development and management of funds for the purposes of providing scholarships, supporting staff, keeping abreast of new technology, and the continued development and improvement of facilities on CVTC campuses.

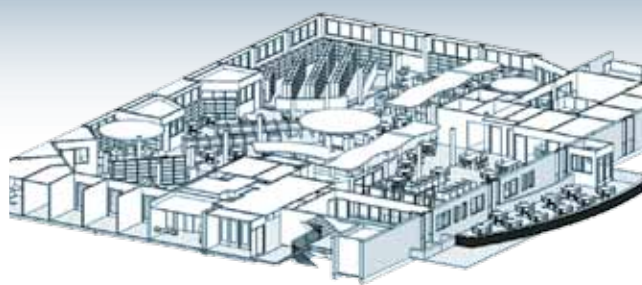
## TWO APPOINTED TO FOUNDATION BOARD

The Foundation Board welcomes two new members, Dr. Leland Mayer and J. Drew Ryberg, both of Eau Claire. Dr. Mayer is an orthopedic surgeon with the Luther Midelfort system. Ryberg has been in private practice with the law firm Ryberg & Happe, S.C., since 1974. "Living in the area I've always had a great regard for CVTC," Ryberg said.

"If the Foundation can assist the College, that's great." Mayer and Ryberg are starting their first three-year terms on the Foundation Board.

# PROVEN.

Performance



Floor plan for new Learning Resource Center

## IMPROVED STUDENT SERVICE AHEAD

Remodeling at Clairemont Campus set for December 2009 through August 2011

### LEARNING RESOURCE CENTER

A \$1.6 million remodeling project will bring student services to the heart of the Clairemont Campus – literally.

The remodeling will create a 16,000-square-foot Learning Resource Center on the ground floor in what College Business and Industry Services Director Doug Olson calls “prime real estate.”

“That shows that we believe these services are central to education,” Olson said.

The Center will house the library, Basic Skills Education/Academic Services, English for Language Learners, and Disability Services.

“All students will know where to go for help, no matter what that help is,” Olson said.

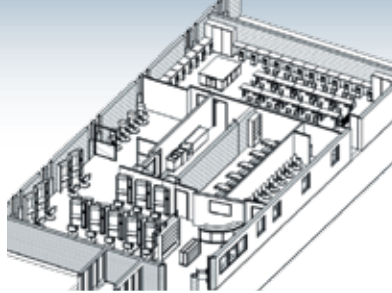
The remodeling is the result of extensive planning and examining other colleges’ approaches, said Margo Keys, Vice President of Student Services. “We focused on the needs of the students. We’re making it more convenient for students to find assistance. We’re updating technology. It will be a modern space with modern technology and design.”

New Learning Resource Center  
Opening August 2010



### REMODELING COSTS

Learning Resource Center	\$1.6 million
Barber/Cosmetology Updates	\$500,000
Student Commons	\$2 million



New Barber/Cosmetology Lab



Rendering of new Student Commons

## BARBER/COSMETOLOGY PROGRAM FACILITIES

Work to create a Learning Resource Center at the Clairemont Campus will result in a makeover for the Barber/Cosmetology lab facilities.

The program's lab will be dismantled to make room for the project, and the program will be interrupted from October 2009 through August 2010. Students in the program will then have new lab and classroom facilities.

What that space will look like is based on extensive research with representatives from the barber/cosmetology field, said Education Director Beth Hein.

"It's designed to give students a real-life experience, with an expanded retail area that reflects the industry today," she said. "Students will have updated styling stations and expanded areas for manicures, pedicures, and facials."

## STUDENT COMMONS

The final phase of the remodeling at the Clairemont Campus will be to transform the current library space into a student commons.

"The Clairemont Campus does not currently have an adequate, welcoming place for students to gather," said College Business and Industry Services Director Doug Olson. "We're going to create an inviting space that will enhance the educational experience of our students."

The new commons will feature more exterior windows, new skylights, flexible seating arrangements, a patio, and food concessions.

CVTC's Student Government Association (SGA) voted to give \$600,000 to the remodeling project over a three-year period. SGA Secretary Nicole Vinson, a Marketing student, said the group came up with a list of reasons to support the expenditure.

Although students have places where they can gather, the new student commons will be an "attention-getter" that can help with student recruitment and will benefit the student population, she said. "We'll have a place to hang out and study," Vinson said. "It will help keep the students on campus for club events."

New Barber/  
Cosmetology Lab  
Opening August 2010

New Student  
Commons Opening  
August 2011

# PROVEN. Investment



Rendering of the Energy Education Center

## INVESTING IN THE ENERGY EDUCATION CENTER

### TOMORROW'S ENERGY TECHNOLOGY

New energy sources and energy-efficient technologies are rapidly advancing and affecting the skills needed for the workplace. CVTC is moving forward to meet the emerging need for technicians trained in "green" technologies, which include bioenergy, energy management systems, and transportation.

A concept plan to remodel existing buildings and construct an Energy Education Center on CVTC's West Campus has been shared with federal and state legislators and officials. An Energy Visioning Session with leaders from the regional energy industry will give input to the Energy Education Center concept and help determine what training, certifications, labs, and equipment are required to meet the workforce needs for new and incumbent workers.

The Energy Education Center will provide space needed to expand programs already in place to incorporate green technologies. Air Conditioning, Heating and Refrigeration students, for example, can gain experience with geothermal heating systems. Auto Maintenance Technician students can learn how to keep hybrid vehicles operating smoothly.

The College has 160 acres at the site; enough room for Horticulture students to experiment with garden plots to filter wastewater and for Agriculture students to expand their experience creating bio-diesel fuels.

"We want to provide the best state-of-the-art equipment to prepare our students for the jobs of the future," said CVTC President Bruce Barker. "And that's what our local business and industry needs also."



Drilling vertical wells for geothermal instructional system

### Your Support

For information on how to support construction of the Energy Education Center, contact the Foundation office:

phone: 715-833-6479

email: [foundation@cvtc.edu](mailto:foundation@cvtc.edu)





Barbara Ries



Dr. Grace Rich



Roy and Jan Fuerstenberg

# DONORS RECOGNIZE TEACHERS' EXCELLENCE

Barbara Ries and Dr. Grace Rich are recipients of the 2009 Roy and Jan Fuerstenberg Teaching Excellence Awards.

Ries, a Mathematics instructor, joined CVTC in 1985. She earned her undergraduate and graduate degrees at UW-Madison and has continued her education through workshops and training sessions. Her goal, she says, is to make mathematics come to life for her students.

In her nomination of Ries, former student Julia A. Smith praised Ries' classroom performance.

"Barbara is an effective communicator, an excellent problem solver, a dedicated individual, and overall one of the best instructors that I have had in my education," Smith wrote.

Rich, a Business Management instructor, has 14 years of teaching experience at CVTC. She also currently serves as Business Management Department Chair. Among those nominating Rich was former student Jennifer Peterson.

"Grace...provides her students with the quality education and dedication to her students' success that CVTC is recognized for," she wrote.



Roy and Jan Fuerstenberg Teaching Excellence Award recipients each receive a \$1,500 cash award

# ANOTHER NEIGHBOR AT NANORITE

The newest resident at CVTC's NanoRite Center is Resonant MicroSystems Inc., a defense contractor investigating production of micro-sized devices. One of the products under development is a detonating device that would be safer and less expensive than present technologies.

The current 10 employees include two CVTC Nanoscience Technology program graduates. More employees are expected to be added by January.



Photo credit: T-Bo Photography

NanoRite

# PROVEN.

Performance



Joe Hegge



Crystal Meinen



## CVTC BUILDS STUDENTS' STEPS TO SUCCESS

More than three years ago, CVTC began putting a special focus on student retention, and the beneficial results are beginning to show.

“In business, one of the measures that is often very telling is that of repeat customers. It is no different for us,” said recently retired CVTC Vice President of Education Joe Hegge. “Not only is it easier to keep existing students, it is also less expensive both for the College and the student.”

Students who are able to complete their educational goals the first time through are at an advantage, Hegge said. They are able to get into the job market faster, often start gaining a better income sooner, and are more confident to return to continue their education.

“From an economic development point of view, helping the largest number of our citizens find and complete their educational plans provides the most capable workforce possible,” Hegge said. “It is good for our students, our employers, and for our economy.”

The best approach, says Margo Keys, Vice President of Student Services, is to identify students who are less likely to succeed in their studies and provide them with the services they need as early as possible.

### INVENTORY FOR STUDENT SUCCESS

“We developed the Inventory for Student Success and after two years it was clear the survey was predictive of student retention,” said Margo Keys, Vice President of Student Services.

Students take the survey as part of their admissions process. Students with low scores in three or more areas are contacted and asked to meet with appropriate staff to start an intervention process.

For example, students who score low on questions about their career choice may not be certain they are entering the correct program at the College. Counselors can provide career information or set up opportunities for the students to shadow someone in that career field.

“Most students have welcomed the chance to share their story and learn about the services we provide,” Keys said.

### Successful Partnership Project

In partnership with regional industries, the Neillsville school district, and Workforce Development, CVTC offered a MIG welding certificate program in Neillsville during the 2009 spring semester. Welding instructor Crystal Meinen reported on the success of the course:

- All 12 students completed the course
- Five are continuing their post-secondary education
- One is employed in the welding industry
- One is seeking employment in the welding industry
- One is enlisting in the armed forces
- Four are employed in areas not related to welding

A second session of the certificate program is being offered this semester.



Natti Marlaire and Margo Keys



## COMPASS™ ASSESSMENT / PREPARED LEARNER

The COMPASS™ assessment measures students' skill levels in reading, writing, and mathematics. Students entering CVTC complete either the COMPASS or ACT assessment.

If the assessment indicates that students lack the academic background to succeed in their selected program, students may be scheduled into Prepared Learner courses. The courses provide the foundation knowledge students need to succeed and help them be more confident in their program classes.

Seven high schools have the COMPASS assessment on computers for students to take as juniors or seniors. If students are found to have deficits in one or more areas, they can be directed to preparatory classes at the high school that will help them succeed in their selected program at CVTC.

"It encourages students to begin preparing for college when they're still juniors," said Natti Marlaire, Manager of Student Services Grants and Operations. "It gives the students a better opportunity to be prepared for success at CVTC. Students are more aware of the programs CVTC has to offer and what career clusters may be of interest to them."

More than 30 high school teachers and counselors recently completed the COMPASS assessment and got an idea of the high level of academic skills CVTC requires for entry into programs.

Brian Woodie, a North High School counselor, was among those who were impressed by the material included in the COMPASS assessment.

"It was a lot harder than I anticipated. I was surprised," he said. "It was insightful to take it and see what the students go through."

## EARLY ALERT

Experienced instructors notice the same phenomena; a short time into the semester, some students begin to fade away. CVTC's Early Alert program is one way to intervene and try to bring those students back into the classroom.

During the third week of the semester, instructors are asked for the names of students who appear to be having problems in the class. Counselors reach out to the identified students to try to match them with services that could help them succeed.

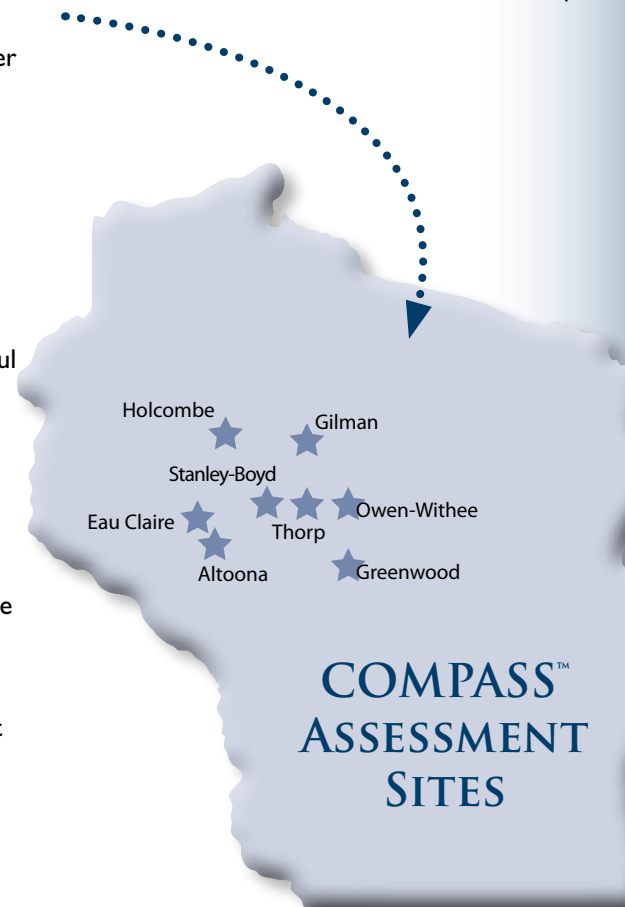
The combination of the Inventory for Student Success, Prepared Learner Courses, and Early Alert has helped retain students.

"Students seem to appreciate that someone cares about them and their success," said Margo Keys, Vice President of Student Services. "It's working."

### Sample Question:

What is the slope of the line with the equation  $2y + 4x = 8$ ?

Answer: Slope = 2



COMPASS™  
ASSESSMENT  
SITES

# PROVEN.

Performance

---



Joe Hegge

## Accomplishments of Note

Before he retired, CVTC's Vice President of Education Joe Hegge listed what he considered to be the College's major accomplishments over the past 10 years:

- Tremendous growth during a time of limited finances
- Moving from the education model to the business model of operation
- More than 200 faculty members hired
- Quality initiatives
- University transfer
- Nanoscience Technology program
- New leadership
- New programs
- Expanded facilities

## CHANGES IN LEADERSHIP

### JOE HEGGE RETIRES

Ten years ago, Joe Hegge came to CVTC to lead the Gateway Campus, armed with experience in manufacturing, an academic background in mechanical design, and extensive teaching and administrative experience.

On September 18th, he retired as CVTC's Vice President of Education, carrying with him memories and a pride in his association with the College and its accomplishments.

"You reach a point where you say 'Now is the time for me to go,'" Hegge said. "Is there a tug? Sure. Any job that you love is hard to leave."

But it's a good time to make the transition, on a personal level and for the College, Hegge said. On the personal level, he'd like to spend more time with his wife Judy and their children. There are carpentry projects waiting to be completed and tourism sites waiting to be explored.

In terms of the College, the transition to a new Vice President of Education will be easier because of the strong leadership in place, he said.

"Any person who steps into the role of president is going to have to go through a learning curve, and Bruce's learning curve has been shorter than just about anyone's. We have a strong, young group of leaders in the College now. It's tremendous," Hegge said. "I also feel good about the next person who sits in this office. Now is the time, after eight or nine years in this role, to let someone else take this leadership role."



Aliesha Crowe



Beth Hein



Natti Marlaire

## NEW LEADERSHIP

Aliesha Crowe is the new Education Director for CVTC’s Agriculture, Energy, Transportation, and Construction programs. She will also be responsible for the development of the planned Energy Education Center.

“I am excited to be a part of these programs at CVTC because of the awesome opportunities for west-central Wisconsin to play a significant role in the energy economy,” Crowe said. “I am especially looking forward to working with the faculty and community partners on the development of the Energy Education Center. This center and its programs will provide CVTC students the skills necessary to contribute to efficient energy use, implementation of renewable energy technologies, sustainability, and economic development in our region.”

For almost eight years Crowe served as UW-Extension Agriculture Agent and Department Head in Rusk County. She taught Vocational Agriculture at Cameron High School from 2000-2002.

Crowe earned a bachelor’s degree in Animal Science at UW-River Falls. She holds a master’s in Agriculture Education with specialization in Adult and International Education, also from UW-River Falls.

## DEVELOPING LEADERSHIP

Beth Hein and Natti Marlaire recently graduated from the Wisconsin Leadership Development Institute’s Leadership Academy, an 18-month course of introspection, networking, and management training.

“The connections you make with other participants are extremely beneficial,” Hein, Education Director of CVTC’s Business division, said. “It’s a lifelong learning journey.”

Graduates become an informal advisory group, said Dr. Margaret Brunn, Coordinator of the Institute. “The graduates have at their fingertips or within a phone call, a listening ear, experienced advice or links to others with the answers,” she said.

Marlaire, Manager of Student Services Grants and Operations at CVTC, said the Institute requires participants to take a good look at themselves and their abilities. “I learned a lot about myself and my style of interaction and how I could better work with other people,” she said.

Hein and Marlaire agreed that they were able to immediately apply what they’d learned through the Institute and have already seen benefits in their work at the College.

The effort is sponsored by the Wisconsin Technical College System.



# PROVEN. Performance



Ellen Kirking



CVTC offers Renal Dialysis Technician program

## A MEASURE OF QUALITY

### HEALTH PROGRAMS RECEIVE STAMP OF APPROVAL

While all CVTC programs must meet high quality standards, those preparing students to work in the health professions are subject to a rigorous accreditation process. Faculty dedicated countless hours in the past year alone to complete the accreditation or re-accreditation of six programs in the health field.

“The faculty work very hard to make sure that programs are up to date and that we meet all requirements for accreditation,” said Education Director Ellen Kirking. “On an ongoing basis, accreditation requires continuous quality improvement. Even when a program receives accreditation, we must continue to look at how we can improve the program to benefit our students.”

Accreditation is an extensive, time-consuming process that involves several steps.

“In the case of the Physical Therapist Assistant program, accreditation meant writing three lengthy self-study documents and hosting two site visits,” Kirking said. “The site visitors examined the College, the faculty, the curriculum, the facilities, the organizational structure, policies of the school, and the student body. Programs also have to prove they will have adequate clinical experience sites for students.”

Accreditation shows that CVTC has quality curriculum in place that leads students to have the skills they need to succeed in their chosen field.

“Accreditation is a measure of the quality of our programs,” Kirking said.

### CVTC CREATES TRAINING SESSIONS FOR RENAL DIALYSIS TECHNICIANS

CVTC is one of only three colleges in Wisconsin offering a Renal Dialysis Technician program. Graduates operate the machines that cleanse the blood of people with chronic kidney disease. The machines act as an artificial kidney to remove waste and excess fluids normally removed by healthy kidneys.

By April 2010, dialysis technicians must be certified. Technicians currently working in dialysis must also be certified to continue their employment. CVTC has created training sessions to help these technicians successfully prepare for the exam.

### Newly Accredited Health Programs

- Health Information Technology
- Nursing
- Physical Therapist Assistant
- Radiography
- Renal Dialysis Technician
- Respiratory Therapy

### Other Accredited CVTC Health Programs

- Clinical Laboratory Technician
- Dental Hygienist
- Diagnostic Medical Sonography
- Medical Assistant
- Surgical Technologist

## STAYING ON TOP WITH NEWLY ACCREDITED HEALTH PROGRAMS

### On Nursing...

"Our Nursing program was granted continued accreditation for eight years in October 2008. The accreditation process for the Associate Degree and Practical Nursing programs is a year-round process. Before the accreditation visit, there was a 15-month effort for 27 faculty, resulting in a self-study that was more than 300 pages long."

—Linda Londre, Nursing program

### On Radiography...

"The Radiography program received the maximum eight-year re-accreditation award. The accreditation process included submitting a self-study document and hosting a two-day visit from the Joint Review Committee on Education in Radiologic Technology. Graduates of accredited programs are eligible to write the American Registry of Radiological Technologists national exam."

—Shelly Olson,  
formerly with the Radiography program

### On Renal Dialysis Technician...

"Our Renal Dialysis Technician program achieved certification through the Board of Nephrology Examiners Nursing and Technology. Certification benefits students; it is a measure of the overall quality of the program and allows graduates to take the certification exam without the work experience requirement – giving CVTC graduates an advantage toward success as they apply for employment."

—Ann Rosemeyer,  
Renal Dialysis Technician program

Health Information Technology: Received reaffirmation of continued accreditation in spring 2009.

Physical Therapist Assistant: The program received five-year accreditation in April 2009 and noted its first graduates in May 2009. This program is offered at only six of the 16 Wisconsin technical colleges.

Respiratory Therapy: This program received three-year re-accreditation in 2008.

## COMMUNITY RECEIVES DENTAL BENEFITS

CVTC's Dental Hygienist and Dental Assistant students receive real-life experience at the College's Eau Claire Dental Clinic – and help thousands of residents of the region in the process:

- More than 30,000 low-income patients served since the Clinic opened in 2004.
- Patients from 27 counties have visited the Clinic.
- About 75 percent of patients are Medicaid recipients.
- The Clinic has a waiting list of more than 2,000 people.
- Patient numbers have expanded every year, reaching 8,550 in 2008-09.

A recent Eau Claire Leader-Telegram newspaper article on health insurance programs included the story of LeAnn Johnson of Red Wing, Minn.; she drove more than an hour each way to bring two of her three children to the Clinic.

"It really saved us," she told the newspaper. "If we wouldn't have found them, I don't know if we would have been able to afford dental care at all."



# PROVEN.

Performance



Carmen Iannarelli



Linda Oliver



Joyce Philen

## TOP TEACHERS

### STATE NEW TEACHER OF THE YEAR AWARD

Carmen Iannarelli, a CVTC Social Sciences instructor, has earned the Wisconsin Association of Career and Technical Education 2009 State New Teacher of the Year Award.

Iannarelli joined CVTC in 2004. She earned a bachelor's degree in Sociology at the University of Iowa and a master's in Sociology at Western Illinois University. She taught part time in Iowa before accepting the position at CVTC.

Teaching at the Technical College is one way for Iannarelli to continue to pursue her own education, she said. "I love learning and I can't afford to be a professional student. This is the closest I can come," she said. "I get to take classes; I get to learn more about my field; I get to learn; and I get to be around college students."

Although she has worked in other areas, teaching is her preferred profession, Iannarelli said. "This is the first job I have had where it felt like it was exactly what I wanted to do," she said. "Teaching is helping people. I'm helping people who have decided to help themselves improve their lives, and it's rewarding to be part of that experience."

### STATE TEACHER OF THE YEAR AWARD

Linda Oliver, an instructor in CVTC's Paralegal program, has earned the Wisconsin Association of Career and Technical Education 2009 State Teacher of the Year Award.

Oliver joined CVTC in 2003 with 13 years of teaching experience, eight years as a civil litigation paralegal, and seven years in city government. Teaching, she said, is first and foremost a commitment to provide students with the best service possible. "I'm here for the students," she said. "I'm going to give them the best I can give. I want them to have the information they need in their jobs and their lives."

Student evaluations mention her dedication to helping students in and out of the classroom, her clear instruction, and her efforts to make the classroom engaging and interesting.

Oliver has served as department chair, delivered instruction for business and industry, developed curriculum, and maintained close contact with the American Bar Association, the group that certifies the Paralegal program. "I feel strongly that everyone needs food, shelter, and education," Oliver said. "I've translated that into a strong commitment to my students. It's a real honor to have that commitment lead to the teaching award."





Speed Networking



Adam Birkholz



Susan Frame and recently retired Vice President of Education, Joe Hegge. Susan, Landscape, Plant and Turf Management instructor was awarded the Domer Distinguished New Faculty Award.

## ABOVE AND BEYOND

Several staff members who created projects to promote quality at CVTC have received the Culture of Excellence Award. The Foundation program recognizes employees who have helped build a culture of excellence at CVTC, create student-staff-business partnerships, or promoted student success and retention.

A \$600 award goes to the Business Management department for Speed Networking, a takeoff on the concept of speed dating, but adapted for Business Management internship students. At last year's premier event, students had five minutes to talk with business representatives from the Chippewa Valley before advancing to the next interview.

"The feedback from students and businesses was really encouraging," said Education Director Beth Hein. "It's an effective way for students and prospective employers to meet – and it's fun."

The Business Technology department received a \$1,160 award for "The Office," a series of monthly face-to-face seminars and activities to promote student success and provide additional learning opportunities for Administrative Assistant program students.

Joyce Philen, a counselor, received a \$1,476 award for developing "Assisting Students During Emotional Distress;" a guide distributed to faculty and staff.

Adam Birkholz, an information technology business process engineer, received a \$2,000 award for creating automated instructor recommendation forms for an online scholarship application process.

## NEW FACULTY AWARD

CVTC Landscape, Plant, and Turf Management instructor Susan Frame received the 2009 Domer Distinguished New Faculty Award.

Frame earned an associate degree in Floriculture at the University of Minnesota Technical College in Waseca, associate degree in Geographic Information Systems at CVTC, and a bachelor's degree in Plant Science at the UW-River Falls. Before joining the staff at CVTC, she worked for the UW-Extension office in Eau Claire County and the Beaver Creek Reserve. She is beginning her third year at CVTC.

"My goal is for my students to understand that while this program can prepare them for the start of their career, they always need to continue their education and training," Frame said. "My job is to teach them where to find the resources and information necessary to continue the educational process required for lifelong learning."



In line with the idea of lifelong learning, Susan Frame recently completed seven one-minute videos to air on WQOW television on topics of interest to regional gardeners. The video clips are also available for viewing on CVTC's website, [www.cvtc.edu](http://www.cvtc.edu).

# PROVEN.

Investment



Mike Strand with his family



David Ekrem



Mike Strand

## CVTC ALUMNI ASSOCIATION

### STRAND: 2009 DISTINGUISHED ALUMNUS

Mike Strand, founder of StrandWare and StrandVision, has been named the CVTC 2009 Distinguished Alumni Award recipient.

Strand graduated from CVTC's Electronics program in 1982 and the Data Processing program in 1984. He and his wife Carmen have three children – all of whom have attended or are attending CVTC.

The Boyceville area native started his career working with supercomputer engineer Seymour Cray.

“Cray representatives came to CVTC to look for people. That helped me get that first job in my field,” Strand said.

He continued to learn about electronics and computers and developed an entrepreneurial approach to his business through various mentors, including Cray. StrandWare was sold in 2001. In his 13 years as president of the firm, Strand oversaw the establishment of 150,000 customer accounts for the company's 27 distinct software products.

StrandVision software networks plasma screen televisions that provide information from news and weather to corporate or organization announcements. CVTC was an early adopter of the technology.

“It's fun coming up with creative approaches that solve technical problems,” he said. “I really love learning. It's not hard to get up in the morning and go to work.”

Strand has maintained a connection with CVTC, often seeking students with the training and skills to join his workforce. Strand has created dozens of high-paying jobs during his career and continues to add to that number. Close to half of Strand's employees have been graduates of the Wisconsin Technical College System.

“StrandWare and StrandVision are built on good employees,” Strand said. “We wouldn't be a success without them.”

### Spring Gala

More than 200 CVTC alumni and friends attended the sixth annual Alumni Association Spring Gala on March 27 at the Florian Gardens in Eau Claire. Highlights of the evening were the naming of the Distinguished Alumni and Alumni Endowment Scholarship recipients.

Thanks to everyone who attended and the sponsors who made the event a success.



Debbie Labs



Dan Pekol



## SCHOLARSHIP RECIPIENT

David Ekrem received the CVTC Alumni Association Endowment Scholarship.

Ekrem graduated with honors from the College's Radiography program in July. He plans to enter radiation therapy school and pursue a career in dosimetry, a specialty that considers radiation dose requirements for targeted tumors and involves computer mapping of radiation treatment for tumors. Ekrem said he plans to use the scholarship for further education.

Ekrem graduated from Memorial High School in Eau Claire in 1995 and studied Art History and Chemistry at Gustavus Adolphus College before leaving to work at the Walker Art Center in Minneapolis. He decided to attend CVTC's Radiography program after touring the Health Education Center.

In the course of his academic career at CVTC, Ekrem job-shadowed a dosimetrist, a radiation oncologist, and a team of radiation therapists.

"David was diligent in his studies, always prepared, always critically analyzing the material, always ready for the next step," said Shelly Olson, one of his program instructors who now serves as Associate Dean of Health. "He appreciated the learning experience so much and was very excited about the field of imaging. David was a model student."

## TWO CVTC GRADS JOIN ALUMNI BOARD

CVTC's Alumni Board welcomes two new members: Debbie Labs of Downing and Dan Pekol of Eau Claire.

Labs is the Continuous Skills Development Manager at ConAgra in Menomonie. She helps determine employees' training needs and sets up programs to meet those needs. She graduated from CVTC's Secretarial Science program in 1970.

"I think further education is very important," she said. "CVTC is a great institution. I like the fact that the College is working with the local universities, too."

Pekol is a co-owner of Chippewa Valley Airport Service. He graduated from CVTC's Marketing program in 2004 and continued his education at UW-Stout. He earned his undergraduate degree in General Business Administration in 2006.

"I had a great experience at CVTC," he said. "I think the instructors do a wonderful job of preparing students for careers in marketing. I'd like to give something back."

CVTC Alumni Board (pictured left to right) Nadine Olson, Administrative Assistant '94 & Supervisory Management '99; Diane Pavelski, CVTC Foundation Executive Vice President; Mark Anderson, Nursing '84; Debbie Labs, Secretarial Science '70; Eric Brusky, I.T. Network Specialist '08; Connie Holden Peterson, Accounting '76; Roger Leque, Police Science '77; Heidi Fisher, Director of CVTC Foundation & Alumni Association; and Karen Delaney, CVTC College Advancement Assistant. (missing from photo) Tom Day, Auto Body '77; Missy Kostman, Marketing '94 and Dan Pekol, Marketing '04.



## Alumni Phonathon Raises Funds

Teams of students raised over \$12,000 during the fall and spring phonathons this past year. The students contact several thousand CVTC alumni during the three-week events; the funds raised are used for scholarships, technology and equipment updates in classrooms, and professional staff development.



Margaret Higley presents the Bryan Higley Memorial Scholarship to Todd Edgar

# SCHOLARSHIPS AWARDED

- APEX Engineering
- ASHRAE/La Crosse Chapter
- Alliance Bank
- Alliant Energy
- AnchorBank
- Calli Andrus Memorial Endowment
- Associated Bank
- Association for Facilities Engineering Chapter 66 (AFE)
- Wayne R. Atkins Endowment
- Auto Value - Eau Claire Auto Parts
- Ayres Associates
- Bank Mutual
- Jerry Barthman Memorial Endowment
- Bartingale Mechanical, Inc.
- Todd Bauer Memorial Line Worker presented by Dunn Energy Cooperative
- C. W. Beede Leadership
- C. W. Beede Memorial Endowment
- Zenas Beers Memorial Endowment
- Gus Bell Memorial Endowment
- Reinhold Bents Memorial
- Clinton Best Memorial Endowment
- Myrtle E. LeMay Best Memorial Endowment
- William J. Boyle Endowment
- Gladys Bramblett Memorial Endowment
- Maybelle Brechlin Price Memorial Endowment
- Clifford Brown Memorial Endowment
- CVTC Adult Basic Education
- CVTC DMS Faculty
- CVTC Foundation Endowment
- CVTC Foundation General
- CVTC Local 2398 Marion Flood Memorial Endowment
- CVTC Machine Tool Faculty & Staff
- CVTC Nursing Faculty
- CVTC Peer Tutor Recognition-Helen Barnes/Sandy Martin Memorial
- CVTC Student Life
- CVTC Teachers' Union
- CVTC Wood Technics Club
- Cancer Remission/Survivor Endowment
- R.E. Carter Memorial Endowment
- Chartwells Diversity
- Chartwells Hospitality Management
- Chippewa Falls Rotary Club
- Chippewa Valley Corvette Club
- ChippewaValleyHomeBuildersAssociation Endowment
- Chippewa Valley Model A Club
- Chippewa Valley Sports Car Club
- Chippewa Valley Sports Car Club-Doug Christensen Memorial
- Chippewa Valley Technical Recruiters Endowment

## Support Student Success

Support student success through scholarships. Call CVTC's Foundation office today: 715-833-6479.

## EXPANDING OPPORTUNITY

A special Foundation campus campaign last year resulted in \$28,000 for Opportunity Scholarships for students just graduating from high school. One \$500 scholarship was made available to a graduate from each high school in the area CVTC serves – a total of 34 scholarships were given to students! Among the criteria, students had to be accepted to a program or pre-program at CVTC and planning to attend full time this fall.



Breanna Geraets,  
Elmwood High School graduate,  
Administrative Assistant:

"I decided to attend CVTC because... the school offers many different programs to choose from, and the campus is a perfect size. The scholarship helped me in many, many ways, including helping me quite a bit in paying for my tuition. Receiving the scholarship also gave me more confidence."



Stephanie Hartung,  
Spring Valley High School graduate, Pre-Nursing:

"I decided to attend CVTC because I feel that getting the hands-on experience that you receive attending a technical college will help me go further with my career choice in the future. This scholarship helped me a lot. I was able to use it to pay for part of my tuition. I would like to thank you again for this opportunity!"



The family of Dave Keays presents the WI Motor Carriers-Dave Keays Memorial Scholarship to Melissa Schmidt



Shirley Crouse presents the Thomas J. Widule Memorial Welding Scholarship to Jeremy Klemke



Pete Riley presented the McKinley Charter School Scholarship to Lue Her

Chippewa Valley Vocational Homemakers Club Endowment  
 Citizens State Bank  
 ConAgra Foods  
 Consolidated Lumber Company d/b/a Arrow Building Center Endowment  
 Jerome D. Contney Memorial Endowment  
 Cummins Great Lakes Career Endowment  
 DSO Diversity Involvement  
 Dairy State Bank  
 Delta Dental of Wisconsin  
 Audrey Dernbach Memorial Nursing  
 Patrick B. Devine Memorial Endowment  
 Josephine Dine Memorial Endowment  
 Disability Endowment  
 Steve Dobson Memorial Endowment  
 Arnold & Lois Domer Foundation  
 Donnellan Dental Hygienist  
 Joanne Dow Business Education  
 Eau Claire County Off Campus Graduating Student Endowment  
 Eau Claire Evening Lions Club - Gordie Berg Memorial  
 Eau Claire Seymour Lions Club  
 Endres Manufacturing Company  
 Gwen Entorf Memorial Nursing Endowment  
 Ericksen Roed & Associates  
 Victor & Eunice Finstad Memorial Endowment  
 Kathryn Fischer Memorial Endowment  
 Lars Fiskars Memorial Endowment  
 Friends of Respiratory Therapy  
 Bruno Gansluckner Memorial Endowment  
 Larry Gansluckner Endowment  
 Satya Garg Memorial  
 Leslie Gilbertson Memorial Endowment  
 Global Finishing Solutions-Civil Engineering  
 Global Finishing Solutions - Welding  
 Great Northern Corporation Endowment  
 Fred Grosvold Memorial Endowment  
 Charles T. Haag Mfg/Technical Trade  
 Gene Haas Foundation Machine Tool  
 Hagen Decorators  
 Carl E. Hagen Memorial Endowment  
 William Hehli Memorial Endowment  
 Nellie Henning Memorial Endowment  
 Bryan Higley Memorial  
 Coy Hobbs Memorial Endowment  
 Sid & Grace Horman Endowment  
 Eleanor M. & Lyle D. Houlder Memorial Endowment  
 IAAP - Chippewa Valley Chapter Endowment

IBEW Local 953  
 ITW Engineered Fasteners  
 Imagineering Computer Consultants  
 Indianhead Old Car Club Endowment  
 Gerald H. Jacobson Endowment  
 Jerry Jacobson Leadership Endowment  
 Cheryl A. Janke Memorial Endowment  
 Johnson, Gunderson & Runkel, Inc.  
 Accounting  
 Jim & Jini Johnson  
 J.G. King Child Care Services  
 Dick Klatt Memorial Welding  
 Arthur Kopp Memorial Endowment  
 Tom Kuehl Memorial Leadership  
 Arland M. Larson Memorial Endowment  
 Larson Allen Accounting Endowment  
 Ken Lee Agency Woods  
 Ray Loer Memorial Endowment  
 Lyman Lumber Of Wisconsin Endowment  
 McKinley Charter School Endowment  
 McKinley Charter School Continuing Endowment  
 Arthur Medtlie Memorial Endowment  
 Menomonie Kiwanis  
 Merrill Iron & Steel  
 Midelfort Foundation  
 John Modl Law Enforcement  
 John Moseng Information Technology Endowment  
 Northwest Wisconsin Building Inspectors Association Endowment  
 Northwestern Bank Endowment  
 Northwestern Wisconsin Peace Officers Association Memorial Endowment  
 Gale R. Otterholt Allied Medical Endowment  
 PDM Bridge Endowment  
 P.E.O. Eau Claire Chapter AF  
 Maynard Pearson Memorial  
 Peoples State Bank of Bloomer  
 Jean M. Peterson Memorial  
 Ruth R. Peterson Memorial Endowment  
 L. E. Phillips Memorial Endowment  
 Jim & Kathy Pinter  
 Premier Dies Corporation  
 Process Metal Innovators (PMI, LLC) Manufacturing  
 Bob Rajotte Memorial  
 Larry Lee Reckin Memorial Marketing Endowment  
 Red Horse Truck Body & Hoist - Auto Collision Repair  
 Red Horse Truck Body & Hoist - Welding  
 Michael Lee Reidt Memorial Endowment

Reinhart Food Service Endowment  
 Walter M. Ringer Jr. Memorial Manufacturing  
 River City Street Rods Car Club  
 River Falls Municipal Utilities  
 Elmer Roos Memorial Endowment  
 Allard and David Rowe Endowment  
 Phil Ruehl Memorial Endowment  
 Rutledge Foundation Service  
 Sam's Club Landscape, Plant & Turf Management  
 Silicon Graphics, Inc. Endowment  
 Skyline Steel  
 John E. Smith Memorial Endowment  
 Carol Sokolowski Memorial Endowment  
 LaVern G. Soper Memorial  
 Frank Sorrentino Memorial  
 St. Croix Electric Cooperative  
 St. Croix Valley Home Builders Association Endowment  
 Robert Straavaldson Memorial Endowment  
 Aura J. & Raymond R. Strong Endowment  
 David F. Suchla Endowment  
 Doris Swartz Memorial  
 TECH Training Systems Electromechanical Technology  
 Debra Tillmann Memorial Endowment  
 Tri-County Medical Alliance Endowment  
 Tsai-Huang Memorial  
 US Bank Endowment  
 University Lutheran Church  
 WJR Endowment  
 WJR Plumbing Endowment  
 Johanna Warloski Diversity Endowment  
 Linda Weaver-Berdami Memorial Endowment  
 West Central Wisconsin AIB/Edna Brown Endowment  
 Western Wisconsin Health Information Management Association  
 Thomas J. Widule Memorial Welding Endowment  
 Wisconsin Dental Foundation  
 Wisconsin Hospital Association Foundation, Inc.  
 Wisconsin Motor Carriers Association Dave Keays Memorial  
 Wisconsin Regional Lily Society  
 Wissota Lake Garden Club  
 Paulette Wright Memorial Endowment  
 Norbert & Helen Wurtzel Endowment  
 Xcel Energy  
 Carol L. Zimmerman Memorial Endowment  
 Robert Zimmerman Memorial Endowment



Pam Entorf, CVTC Dental Hygienist Instructor and daughter of Gwen Entorf, presented the first Gwen Entorf Memorial Nursing Endowment Scholarship to Leslie Bourget. The newly established endowment was made possible by family and friends of Gwen Entorf.

# THANK YOU DONORS

July 1, 2008 - June 30, 2009

## MONETARY CONTRIBUTORS \*CVTC Employees

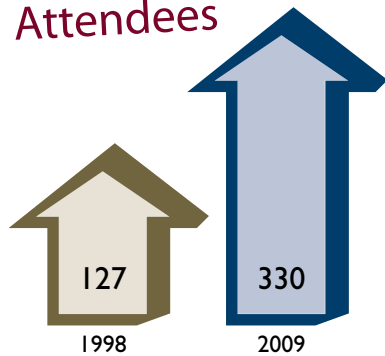
3M Foundation  
4CharityFoundation, Inc.  
ASHRAE-La Crosse Chapter  
AT&T Foundation  
Betty J. Abley  
Daniel R. Adams\*  
Rose M. Adams  
Juli C. Ahneman  
Todd S. Ahneman  
Mary Carter Albert  
Angela R. Albrecht  
Jan M. Albrecht  
Alliance Bank  
Alliant Energy Foundation  
Jonathan J. Altman  
Gwendoline B. Amoaipim\*  
AnchorBank  
Jennifer L. Anderegg\*  
Terry C. Andersen  
David B. Anderson  
Donald F. Anderson & Cheryl R. Hewitt  
John F. & Anne M. Anderson  
Kris A. Anderson  
Loren C. Anderson  
Mark D. & Nancy J. Anderson  
Sharon M. Anderson  
Wayne R. & Susan L. Anderson  
William L. & Lauri K. Anderson  
Michael M. & Dawn M. Andraschko  
Janet M. Andrea  
Betty J. Andrus  
Thomas J. & Nancy J. Anen  
Douglas E. & Christine M. Anibas  
Judith A. Anibas\*  
Melissa M. Anibas\*  
Todd M. & Tina S. Anibas  
Susan F. Arndt  
Philip L. & Nancy J. Arneson  
Elizabeth A. Ashley  
Associated Bank  
Association for Facilities Engineering Chapter 66  
Wayne R. & Tawny J. Atkins  
Debra L. Ausman\*  
Patrick A. & Cindy L. Auth  
Auto Value Parts Store

Ayres Associates  
Duane A. Badman\*  
Laura A. & Christopher J. Bagan  
Juliana V. Baker\*  
Richard E. & Rachael J. Baker  
Amy D. Balfour  
Bank Mutual Corporation  
Bruce A.\* & Ann E. Barker  
Leigh Barker-Cheesebro  
Bartingale Mechanical Inc  
Donna M. Bartos  
Carol A. Bartz  
Ashley L. Bauer  
Charles A. Bauer  
Christopher S. Bauer  
David A. & Laurie A. Bauer  
John J. & Beth A. Bauer  
Kay A. Bauer\*  
Laurie T. Bauer  
Louise M. Bauer  
Mark A. Bauer  
Mary L. Bauer  
Baxter International Foundation  
Ronald J. & Judith K. Baxter  
Barbara A. Beastron  
Kathryn J. Bechel  
Bruce B. & Nancy A. Bejin  
Matthew E. Bell  
Michael A. Belmore  
Mary E. Bement  
Dale A. & Amy J. Bender  
Bryan C. Benning  
Lisa R. Benning  
Debra R. Benoit  
Randy I. & Dawn M. Benson  
Rosella E. Bents  
Gail M. Beranek  
Curtis L. Berg  
Doreen G. Berg  
Mary L. Berg  
Michael J. & Mary L. Berg  
Pamela S. Berg-Merritt & Neal M. Merritt  
Cherrie A. Bergandi\*  
Rosemary A. Berger\*  
William J. & Kristen L. Berger  
Mary M. Bergeron  
Cynthia I. Bernklau  
Kari M. & Justin E. Best  
James E. Bevins\*  
Brian J. Biederman  
Anthony J. Bielecki  
Kathleen M. Biesterveld  
Roger A. & Julie A. Biesterveld

Terry L. Bilderback\*  
Paul G. Billmeyer\*  
James C.\* & Patricia A. Binder  
Robert L. Birchler  
Marlin F. Bird  
Blanche H. Bischoff  
Kristoffer T. Bjerke\*  
Trina E. Blaschko\*  
Patricia D. Blazer  
Lynn M. & Tim S. Blienk  
Jeffrey T. & Joan L. Block  
Kenneth R. & Kathy J. Blodgett  
Julie A. & Barry C. Bloom  
Lori A. Boeck\*  
Charles W. Boehlke  
Alice C. Bohl  
Jeffery E. & Margo D. Boigenzahn  
Stanley E. Bonk\*  
Rhonda M. Boos  
Dawn M.\* & Robert J. Bosold  
Daniel S. & Julie F. Bowe  
Jayne M. & Anthony N. Bowe  
Jeffrey P. & Julie E. Bowe  
Jeremy J. Bramucker  
Sheri L. Brandstetter\*  
Vicki L. Brandt\*  
Kolleen J. Branger  
Lynn C. Brantner\*  
Sherry S. Brasda  
Susan M. Brehm\*  
Cory R. & Corinne M. Breidung  
Otto Bremer Foundation  
Mike J. Brenke  
Nathley A. Brennan\*  
Regi J. & Cynthia S. Brenner  
Dale L. Brian  
Colleen M. Brill  
Mark L. Brindle  
Curtis M. & Lisa M. Brion  
Mike F. & Rosemary Brion  
Mark A. Brixen  
Dawn M. Brockhaus  
Bud W. & Theresa M. Brommer  
Jolene M. Brost\*  
Donald L. Brott  
Ardelle M. Brown  
Donna K. Brown  
Geraldine M. & Garry D. Brown  
Kathleen A. & Kevin L. Brown  
Robert P. Brown\*  
Terry L. Brown  
Marcia D. Bruflat\*  
Lisa A. Bruhn  
Steven & Peggy Brummond

Lynn T. Brunett  
Margaret M. Brunn\*  
Daniel J. & Connie F. Brunner  
Judith A. Brunner  
Kathleen M. Brunstad  
Jon A. Brutlag\*  
Bruce E. & Lisbeth C. Buchholz  
Terri A. & John J. Buhrow  
Robert L. Burch  
Scott J. & Julie D. Burkart  
Todd L. & Jean M. Burkart  
Lance A. & Kimberly J. Burke  
Dawn M. Burlum  
Karie L. & Kenneth L. Butterfield  
Matthew W. Butzer  
Tracey L. Buxton  
Roy A. Bystedt, Jr. & Kris A. Cusick  
CVTC DSO Club  
CVTC Local 2398  
CVTC Marketing Club  
CVTC Respiratory Therapy Student Club  
CVTC Student Life  
CVTC Woods Club  
Bobbi J. Cabak  
Dick & Marlene Cable  
Duane W. Call  
Ann T. Capaul  
Cardinal FG  
Kurt S. & Ruth M.\* Carlson  
Tracy L. Carlson  
Carla M. & Tony D. Carlstrom  
Jonathan T. & Jennifer M. Carrick  
James C. Carter  
Mary K. Casey\*  
William J. and Gertrude R. Casper Foundation  
Thomas W. Cerrato  
Sherry R. Chambers\*  
Robert W. & Gail M.\* Charlesworth  
Bruce T. Charron  
Chartwells  
Chippewa Falls Rotary Club  
Chippewa Valley Body Shop Association  
Chippewa Valley Corvette Club  
Chippewa Valley Model A Club  
Chippewa Valley Sports Car Club  
Renee S. Christensen\*  
Alec B. & Vicki L. Christianson  
Marc J. & Lisa M. Christopher

## Scholarship Luncheon Attendees





Gold Cross donates a two-stretcher ambulance



CVTC hosts annual Chamber Breakfast



NorthwestBuildingInspectorsAssociationaddto their endowed scholarship fund

- |                                    |  |  |                                   |   |   |
|------------------------------------|--|--|-----------------------------------|---|---|
| Ross L. Christopherson             | Gayle A. Dodge                             | Sally E. Felling                                     | Amy L. & Michael J. Gust          | David J. Hoban*   | Ann M. Johnson                                    |
| Steven A. Chronis*                 | Linda M. Dodge                             | Mary J. Felton-Kolstad*                              | William J. & Michele T. Gustafson | Brenda S. Hodowanic   | Candace S. Johnson*                               |
| Citizens State Bank                | Alan R. Dohm*                              | Christi L. Ferrara                                   | Thomas D. & Suzanne M. Gustum     | Robert D. & Judith A. Hoehn   | E O Johnson Company                               |
| Sheila M. Ciulla                   | Arnold & Lois Domer Foundation             | Lori L. Ferrer*                                      | Steven T. Gutsch*                 | Vicki J. Hoehn  | ElRose Johnson                                    |
| Charlene M. Clare*                 | Monica J. Donnellan*                       | James A. Feuling                                     | Charles T. & Linda J. Haag        | Alisa S. Hoepner*   | Karen K. & Thomas A. Johnson                      |
| James M. & Margaret H. Clare       | Dennis S. Dostal                           | Gordon Finkelson                                     | Christopher J. Haas               | William J. Hoffstatter*   | Kenneth R. Johnson*                               |
| Lori A. Clark                      | Christine M. Douglas                       | Victoria E. Finstad                                  | Melinda S. Haase                  | Connie Holden Peterson & William R. Peterson                                    | Dean E. & Rosalie Johnston                        |
| Paul A. Clark                      | Dove Healthcare Nursing and Rehabilitation | First National Bank of River Falls                   | Hagen Decorators, Inc.            | Bernard G. & Laurie L. Holen  | Jeffrey R. & Karen Jones                          |
| Lynn C. Cleasby                    | Joanne E. Dow                              | Jeffrey A. Fisher                                    | Kenneth J. & Beverly J. Hagen     | William G. & Mary L. Hollister  | Jeff W. Juzwiak                                   |
| Paul A. Clark                      | Donald J. Draeger                          | Barbara F. Fiskars                                   | Larry B. Hagness                  | John E. & Margaret A. Holzhueter  | John E. & Jacquelyn R. Kaanta                     |
| Lynn C. Cleasby                    | Jeff C. & Patti S. Dregney                 | Daniel L. Flaten*                                    | Jerry J. Halbleib*                | Jon E. Holzwarth  | Evonne L. Karpinske                               |
| Ruth A. Collis*                    | Tracy M. Drier*                            | Foley United   | Joyce B. Hall*                    | Sara A. Hormig  | Ann M. Kassing*                                   |
| ConAgra Foods - Home of Swiss Miss | James R. Driscoll                          | Troy D. & Amy K. Forcier                             | Michael S. & Carrie L. Hallquist  | Joan A. Hoy   | Mary J. Keays                                     |
| Julie M. Conner*                   | Lucille T. Dufeck                          | Bobbi L. Forsythe                                    | Judy C. Hamre                     | Li-Chin Huang*  | Cheryl A. Keegan                                  |
| Debora J. Cook                     | Deborah A.* & Randy J. Duncanson           | The Foundation of the Wisconsin Auto & Truck Dealers | Richard D. & Nicolette M. Hanna   | Marcie M. Hueser  | Daniel S. & Dawn R. Kegley                        |
| Joseph L. Cook*                    | Dunn Energy Cooperative                    | Lynn M. Fox  | Amy M. Hansen                     | Chris A. Huff   | Gail M. Kelble                                    |
| Jon C. Cooley*                     | Donald L. Dunow                            | Susan R. Frame*                                      | Catherine J. Hansen               | Thomas G. Huffcutt*   | John D. Kennedy                                   |
| Molly A. Craker*                   | Jeanne L. DuPuis                           | Jeffrey E. & Jacqueline J. Frase                     | Sarah A. Hansen                   | Sandra C. Hume*   | Steven M. Kensmoe                                 |
| Rhonda J. Crandall                 | Philip S. Dzubay                           | Bernadette J. Frederick                              | Sheldon C. Hanson*                | William J. Hunt   | Suzanne M. Kent                                   |
| Karol A. Creaser                   | Eau Claire Evening Lions Club, Inc.        | Jeffrey J. & Sara J. Frenette                        | Julie B. Harmer                   | Michelle A. Huppert   | Anthony A. & Susan M. Kent                        |
| Julie C. Cross*                    | Eau Claire Realty, Inc.                    | Roy M. & Janice M. Fuerstenberg                      | Maria C. Harp                     | Jennifer L. Hurd  | Roger K. & Lisa M. Ketchum                        |
| Paul A. Custack                    | Eau Claire Seymour Lions Club              | Doug J. Furuseth                                     | Sheree A. & Gary J. Hartman       | Jean A. Husby*  | Deborah J. Keys*                                  |
| Aaron M. Czappa*                   | Pamela K. Ebel*                            | Gerri L. Gamroth*                                    | Steven D. Hartung                 | Angela D. Huse  | Margaret A. Keys*                                 |
| Mark A. Dachel                     | Karla M. & Thomas A. Ebert                 | Richard D. Gardow                                    | William F. & Maribeth K. Hartung  | Raeann M. Hutchinson*   | Walter F. Huth*                                   |
| Robert G. & Cecilia A. Dachel      | Gerald D. Eder                             | Narendra & Sarita Garg                               | Timothy L. Haukeness              | Gary G. Ida   | William A. & Barbara M. Ihlenfeldt                |
| Cheryl L. Dahl*                    | Renee J. Eder                              | Patricia K. Gaulke                                   | Rebecca K. Havens*                | William A. & Barbara M. Imagineering LLC  | Independent Insurance Agents of Western Wisconsin |
| Lucas A. Dahling                   | Christine K. Eggers                        | Sheila A. & Robert R. Gawinski                       | Ione M. Hebert                    | William A. & Barbara M. Int'l Brotherhood of Electrical Workers Local Union 953 | Mike G. & Bonnie J.* Isaacson                     |
| Dairy State Bank                   | Todd M. Eide                               | Richard R. Germann*                                  | Joseph R.* & Judith M. Hegge      | ITW Engineered Fasteners  | Keith W. & Karen R. Ives                          |
| David L. Dalsveen*                 | Terry A. Eikamp                            | Ann M. Gerrits*                                      | Beth A. Hein*                     | Keith W. & Karen R. Ives  | Kristine K. Jackson*                              |
| Sandra A. Damiani                  | Bryant L. & Terry L. Ekstrom               | Brian D. Gerrits*                                    | Amity J. & Gregory C. Heimbuch    | Nancy J. & Robert J. Jackson  | Nancy J. & Robert J. Jackson                      |
| Barry D. & Sarah J. Daniels        | Lonnje J. Ellefson                         | Jonathan W. & Maureen A. Gessner                     | David E. & Laurel A. Helgerson    | Patty J. & John Jackson   | Gerald A. & Sandra L. Jacobson                    |
| W S Darley & Company               | Endres Manufacturing Company               | Dianne M. Glaus                                      | Janine M. Helgevoid Monzel        | Gerald A. & Sandra L. Jacobson  | Gerald H. & Mary L. Jacobson                      |
| Daniel O. Davidson                 | Douglas P. & Mary J. Entorf                | Linda S. Glenz                                       | Barbara J. Heller                 | Scott L. Jacobson   | Myron D. Jahnke                                   |
| Carol L. Davis                     | Pamela J. Entorf*                          | Global Finishing Solutions                           | Pamela J. Helmeid                 | Valerie L. & Peter A. Jain  | Roxanne K. Janisewski                             |
| Christine E. Davis*                | Kristine K. & Ronald E. Erdman             | David R. Godlewski*                                  | Deyette K. Helminski              | Dawn M. Jaquish   | Dawn M. Jaquish                                   |
| Julie M. Dayton                    | Donald G. & Linda L. Erickson              | Michael R. Gonzaga                                   | Mark R. Hendrickson*              | Craig W. & Barbara J. Jascor  | Marilyn J. & Joseph J. Jaskot                     |
| Greensky P. Deardorff              | Lynn M. Erickson*                          | Brian M. Goodman*                                    | Bandi R. Henke*                   | Steven A. & Karla J. Jensen   | John A. Joadwine*                                 |
| Theresa A. Dehne*                  | Terri E. Ernst                             | Steven J. Goplin                                     | Donald K. & Janelle L. Henning    | John A. Joadwine*   | Lynelle R. John                                   |
| Steven M. Dekan                    | Kimberly S. Ernstmeyer*                    | Mary E. Gorud*                                       | Timothy J. & Joyce A. Henning     | John A. Joadwine*   | Johnson, Gunderson & Runkel, Inc.                 |
| Karen K. Delaney*                  | Randall J. Espie                           | Nicholas R. Gosdin                                   | Jane L. Henschler*                | John A. Joadwine*   |   |
| Dell Construction Co., Inc.        | Debra L. Evans                             | Grace Home Respiratory, Inc.                         | Ruth A. Heraver                   |   |   |
| Linda L. DeMoe                     | Gail L. Everts*                            | Great Northern Corp-Kell Container                   | Marlene M. Hick                   |   |   |
| Kirby D. & Beth E. Dennis          | Express Employment Professionals           | Lori L. & Charles L. Gregorich                       | Martin W. Hickey                  |   |   |
| Robert W. Dernbach                 | Roger A. & Ruth L. Fagerland               | Patricia R. Griffin*                                 | Rebecca L. Hicks*                 |   |   |
| Angela M. & Pete J. DeRouin        | Steve J. & Rebecca S. Fahey                | Kathleen G. Grill                                    | Margaret A. Higley                |   |   |
| Garry A. Dettman                   | Kathie J. & Greg J. Fahrman                | James R. Gross*                                      | Sharon A. Hildebrand*             |   |   |
| Edward E. Dettmer                  | Thomas P. Faschingbauer                    | Charles M. Grossklaus                                | Larry J. Hilgart                  |   |   |
| Jessica L. Deutsch                 | Heidi L. & Roland D. Faulkner              | Joan M. Gruber*                                      | Gary D. Hill                      |   |   |
| Thomas W. Devine                   | Priscilla L. & Douglas J. Felix            | Yvonne M. & William M. Grutzmacher                   | Larry R. & Joey M. Hillman        |   |   |
| William J. & Susan L. Devine       |  | Matthew R. Guse                                      | Frederick A. Hines                |   |   |
| William J. & Susan L. Devine       |  | Roger E. Guse  | Diane M. & Larry J. Hinke         |   |   |
| William J. & Susan L. Devine       |  |  | Mary L. Hinrichs                  |   |   |



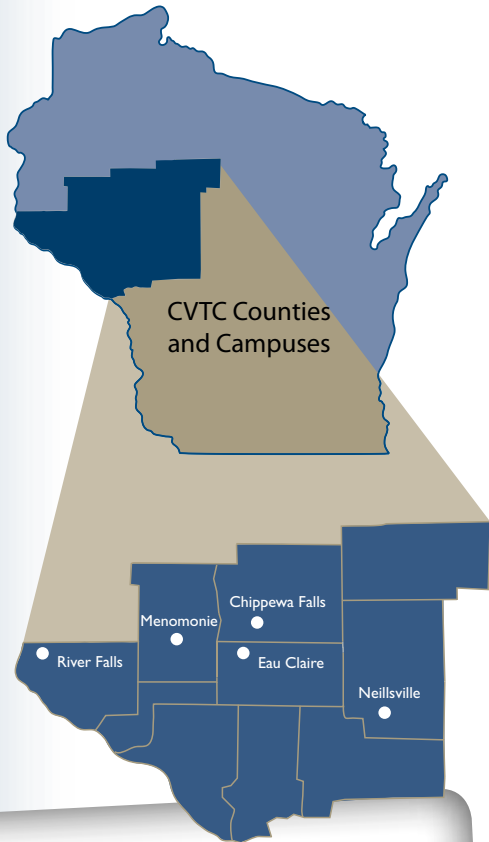
Marketing Club students, instructors, and alumni enjoy the Spring Gala



Respiratory Therapist program forms an alumni chapter



Honda Power Equipment donates 32 engines to the Motorcycle, Marine & Outdoor Power Products Technician program



CVTC Counties and Campuses

## COLLEGE OVERVIEW

Chippewa Valley Technical College, part of the Wisconsin Technical College System, serves an 11 county area with the largest campus located in Eau Claire. The College is one of 16 in the Wisconsin Technical College System.

- |  |                                    |   |                                       |
|--|------------------------------------|---|---------------------------------------|
| Linda M. Krueger*                            | Debra A. Marsolek*                 | Donna M. Nelson                           | Jeffrey S.* & Julie K.*               |
| Paul L. Krueger                              | Eugene R. Mataczynski*             | Kris L. Nelson                            | Pepper                                |
| Ronald P. Krueger & Ann M. Tornowske-Krueger | Heather L. Mathis                  | Michelle L. Nelson                        | Aimee J. Pernsteiner*                 |
| Cindy J. Kuba                                | Marlene T.* & Kent A. Mathison     | Travis L. & LaShawn M. Nelson             | Scott A. Pernsteiner                  |
| Judith A. Kucera                             | Leland R. & Anna M. Mayer          | William E. & Joanne K. Nemitz             | Charles A. Peterson                   |
| Jackie L. Kunstman                           | Julie A. McCormick*                | Nancy L. Nerdrum & Thomas M. Meyer        | Christine M. & Michael J. Peterson    |
| Erika J. Kurasz                              | Thomas D.* & Victoria J. McCracken | Daniel J. & Linda L. Ness                 | Richard J. Peterson                   |
| Kathleen M. Kurshinsky*                      | Lee E. & Jean M. McClquham         | Glen H. Neubauer*                         | Theresa A. Peterson                   |
| Kathleen A. Kuznar*                          | Patrick T. McIntyre                | Julie A. Neuhaus*                         | Jeffery J. & Susan L. Pettis          |
| Anthony J. & Sheila E. Kvapil                | McKinley Charter School, Inc.      | Cynthia S. Newcomb*                       | Laura J. Pettis                       |
| Cathi J. LaFontaine*                         | Mega Charities                     | Sara E. Nichols*                          | Lan N. Pham Vu*                       |
| Ann M. Lane                                  | Theresa J. Meinen*                 | Sara J. Nick*                             | Joyce E. Philen*                      |
| Lori M. Lane                                 | Mark A. Meisner                    | Michael A. Nickels*                       | James B. & Kathleen H. Pinter         |
| Jerome D. & Lisa M. Lanners                  | Menomonie Kiwanis                  | Barbara J.* & James L. Nicolet            | Debra S. Piper                        |
| Franki J. Larrabee*                          | Menomonie Street Dental            | Carrie A. Nielsen                         | Dale M. & Kay L. Place                |
| Jennifer L. Larrabee*                        | Jeff L. & Michelle E. Menting      | Jason E. & Teresa A. Nilssen              | Plank Enterprises, Inc.               |
| Dennis C. Larson                             | Ann C. Mentink                     | Karen M. Northup                          | Steven B. Plendl*                     |
| Melanie K. Larson                            | Timothy J.* & Kathleen E.* Mentink | Northwest Building Inspectors Association | David E. Podoll                       |
| Larson Allen LLP                             | Merrill Iron & Steel Co.           | Northwestern Bank                         | Richard A. Polzer*                    |
| Wade A. Latz*                                | Merrill Lynch                      | Annamarie Novak                           | Richard D. & Andrea T. Ponto          |
| Gary E. Lauterbach                           | Jamie L. & David A. Meyer          | Shawn A. Oatman                           | Lois J. Porath                        |
| Jeffrey D. LeCount*                          | Patricia J. Meyer                  | Michelle M. O'Connell*                    | John T. Pozarski                      |
| Leanne M. LeDuc                              | Beth S. Meyer-Robinson             | Claudeen R. Oebser*                       | Premier Dies Corporation              |
| Ken Lee Agency                               | Midelfort Foundation, Inc.         | Teresa M. Oehlke                          | The Presto Foundation                 |
| Robin K. LeMay                               | Hans P. Mikelson*                  | Linda F. Oliver*                          | Richard D. Pribnow                    |
| Janice A. Lemminger                          | Dan E. Miller & Cindy K. Olson     | Douglas A. Olson*                         | Todd R. Prissel                       |
| Roger D. & Ann M. Leque                      | Evelyn K. Miller                   | Kim R. Olson                              | Rorey D. Pritchard                    |
| Denise R. Lesny                              | Julie A. Miller*                   | Nadine A. Olson*                          | Productivity Quality, Inc.            |
| Pamela R. Lewan                              | Lee A. & Darven H. Miller          | Scott M. Olson                            | Michelle M. Pryse                     |
| Marjorie A. & Timothy R. Lewison             | Turi J. Miller*                    | Shelly Y. Olson*                          | Mark J. Puig*                         |
| Richard W. Lieven                            | Mary A. Millis                     | Victoria M. Olson                         | QISC Inc                              |
| Lynne M. Lindbo*                             | Minnesota Wire and Cable Co.       | Daniel M. & Gayle A.* Ostermann           | Virginia W. Quayle                    |
| Jan K. & Mary J. Link                        | Gary A. & Tamara R. Mitchell       | Pamela D. Owen*                           | Julia E. Raehpour*                    |
| David A. & Margaret Linse                    | Kathy J. Moehagen                  | P.E.O. Eau Claire Chapter-AF PMI, LLC     | Daniel J. Raffesberger*               |
| Kyle K. Loewenhagen*                         | Kirk L. Moist*                     | Pactiv Corporation                        | Kristen A. Raney*                     |
| Daniel R. Lofald*                            | Jerold W. Moldenhauer*             | Jeffrey L. & Marie L. Pagenkopf           | Barbara A. & John M. Rasmus           |
| Daniel J. & Debra K. Loiselle                | Bruce J. & Jo Ann Moll             | John A. Pagenkopf                         | Red Horse Truck Body & Hoist, LLC     |
| Evelyn M. Lompa                              | Tamara J. Monson                   | Pamela A. Palzkill & Phillip J. Prusak    | Roger F. & Bonnie J. Reese            |
| Linda M. Londre*                             | Ruth J. Morey                      | James A. & Denise M. Parker               | Wade R. Reese*                        |
| Sharon E. Long                               | Bernard J. Morrissey               | JoAnn A. Parks                            | Dale J. Reinart                       |
| Julia R. Lorenz*                             | Michael W. & Linda K. Morrissey    | Lynda L. Patrow                           | Kerry T. & Teri L. Reinhardt          |
| Robert C. Loughan*                           | James R.* & Nancy B. Mortwedt      | Cheryl A. Patten                          | Russell J. Revie                      |
| Kenneth R. Lueck                             | Steven A. & Jennifer M. Moschkau   | Diane I. Pavelski*                        | Grace E. Rich*                        |
| Jack L. Luedtke                              | Todd A. & Lynda K. Moseley         | Rebecca L. Pearl                          | Judy C. Richardson*                   |
| Diane M. Lund                                | John L. Moseng                     | Catherine A. Peck*                        | Wayne A. & Mary C. Richmond           |
| Luther Midelfort                             | Tara S. Mrozinski                  | Allen J. Peden                            | Barbara A. Ries*                      |
| David C. MacLaughlin                         | Ronda L. Mueller                   | Sylvia J. Pederson*                       | Connie J. Rindal                      |
| Harold J. & Margaret Magnus                  | Julie M. & Tracy E. Murphy         | Diane Y. Peil                             | Dolores M. Ripp                       |
| Linda C. Magnus                              | Rusty R. Naylor*                   | David A. & Tamara J. Pellett              | Cheryl A. Risler*                     |
| Betsy L. Maher                               | Lynette M. Neibauer*               | Susan L. & Daniel S. Pelzel               | Judith M. Ristow                      |
| Mary F. Mahr                                 |                                    | People's State Bank - Bloomer             | River City Street Rods Club           |
| Michael H. Maier                             |                                    |   | River Falls Municipal Utility         |
| Randy G. Marden                              |                                    |   | Riverside Machine & Engineering, Inc. |
| Market and Johnson Inc                       |                                    |   |                                       |
| Dan R. & Deborah A. Market                   |                                    |   |                                       |
| Markquart Motors                             |                                    |   |                                       |
| Natalyn M. Marlaire*                         |                                    |   |                                       |
| Marshfield Clinic                            |                                    |   |                                       |



Ken Vance Motors Inc. Body Shop sponsors a table at the Gala



Marshfield Clinic Dental sponsors a table at the Gala

Jeaneen A. Roberts\*  
 Sharon M. Rogers\*  
 David G. Roos  
 Laura J. Rose  
 Ann K. Rosemeyer\*  
 Diane M. Rosenbrook  
 Nancy J. Rosentrater  
 David A. Rowe\*  
 Elizabeth A. Rowe  
 Royal Credit Union  
 John A. & Elizabeth H. Ruesch  
 Lynn A. Ruesch\*  
 Patricia J. Ruggles  
 Amy C. Rundquist  
 Sheila J. & Jack O.\*  
 Running  
 Edward & Hannah M. RutledgeCharities, Inc.  
 Danielle K. Ryan  
 J. Drew & Mary H. Ryberg  
 Julia C. Ryder  
 Karen A. Sabin  
 Sacred Heart Hospital  
 Saint Joseph's Hospital  
 Tina M. Salava\*  
 Gerald T. & Lynn M. Salter  
 Sam's Club 8185  
 John M. & Tami V. Satre  
 Roger A. Schaefer  
 Ricky M. Schauss\*  
 Jane A. Scheuermann\*  
 Jennifer E. Schieffer  
 Cathy S. Schindler  
 Janice L. Schindler  
 Judith A. Schindler  
 Steven R. Schlough  
 Steven D. & Linda L. Schmidt  
 Daniel W. Schmock\*  
 Jeffrey R. & Roberta A. Scholze  
 Barry J. & Melissa K. Schuebel  
 Sandra S. Schulner  
 Jason A. & Pamela A. Schultz  
 Rodney K. Schultz\*  
 Deborah J. Schumacher\*  
 Paul E. Schumacher  
 Brian R. Schwahn\*  
 RW Scobie, Inc.  
 Stephen V. Secraw\*  
 Carolyn G. & Roger E. Sell  
 Katherine A. Sell\*  
 Steven D. Senor\*  
 Donna E. Setterlund  
 Emily D. Severson\*  
 Robert D. Shakal  
 Mary E. Shepardson\*  
 Michael N. Siker  
 Daniel J. & Diane M. Sinz  
 Robert J. & Lori L. Sinz

Roslyn A. Siudak  
 Skyline Steel, Inc.  
 David M. & Lynnette M. Smith  
 Kristine A. Smith  
 Judith A. Snudden  
 Patrick M. Snyder  
 Connie J. & Daniel R. Solfest  
 Joseph M. Sonsalla\*  
 Rita K. Sorkness  
 Allen C. Spaeth\*  
 SpectrumIndustries, Inc.  
 C.J. & Stacy M. Spindler  
 Anna Stadnicka  
 Steven L. Stamm  
 Roger J. Stanford\*  
 Timothy H. Stanton\*  
 Sonja K. Steele\*  
 Deanna M. Steinberger  
 Jenny R. Sterzinger  
 Annette P. Stoik\*  
 Lisa M. Storms\*  
 Robert G. Strasburg  
 Barbara J. Stuber\*  
 Rick L. Sturtz  
 Karla J. Svedarsky\*  
 Deborah J. Svee  
 Jeremy J. Svihovec\*  
 Linda L. Swartz  
 Kevin Sweeney  
 Dwight L. Swenson\*  
 Barbara L. & Robert F. Sylla  
 TTM Technologies  
 Denise L.\* & Dean L. Tabor  
 Barbara L. Tanner\*  
 Karen L. Taylor\*  
 Terry L. Taylor\*  
 TECH Training Systems, Inc.  
 Brenda L. Thalacker\*  
 Michael J. Thibodeau\*  
 Jerome L. Thiessen  
 Amy J. Thomas  
 David J. Thompson\*  
 Flint D. Thompson\*  
 Todd L. & Beth A. Thune  
 Susan M. & Michael S. Tkachuk  
 Melissa M. Tomesh\*  
 Brenda L. Trachsel  
 David H. Turany  
 Lucretia K. Turnquist  
 Wesley G. & Alice M. Tuttle  
 US Bank  
 James R. & Cheryl L. Ulberg  
 Michelle A.\* & Michael A. Umland  
 United Health Care  
 Schuyler Van Gorden\*  
 Ken Vance Motors Inc  
 Thomas J. Vanderloop\*

Roxann S. Vanderwyst\*  
 Robert J. & Ruth B. Verbrugge  
 Nicole M. Vinson  
 Kimberly R. Vlcek  
 Jane C. Voll  
 David A. Vollmer\*  
 Kimberly A. Vollmer\*  
 Rosanne M. Vonasek\*  
 John J. Wagner\*  
 Wal-Mart Distribution Center #6025  
 Wal-Mart Supercenters- #1365 Hudson  
 #1669 Eau Claire  
 #1819 Menomonie  
 #5432 New Richmond  
 Beverly K. Waterhouse  
 Waunakee Airport & Pilots Association, Inc.  
 Darcy G.\* & Kimera K. Way  
 Christy J. Weisenberger  
 Kathleen A. Wenell-Nesbit\*  
 Richard O. & Mary A. Werlein  
 James N. Werner  
 Western Wisconsin Health Information Management Association  
 Wes G. Westphal  
 Walter E. Wetzal  
 Joyce R. Whirry  
 Timothy T. & Angela M. Whiteside  
 Jon D. Will\*  
 Mark H. Willer  
 WIPFLI LLP  
 Wisconsin Crop Production Association  
 Wisconsin Dental Foundation, Inc.  
 Wisconsin Hospital Association, Inc.  
 Wisconsin Physical Therapy Association- Northwest District  
 Wisconsin Lakeside Garden Club  
 Diane L. Witt-Rose\*  
 Christina M. Woodford  
 Denise E. Woodford\*  
 Adam M. Writz  
 Norbert K. & Helen L. Wurtzel  
 Xcel Energy  
 XcelEnergy-Menomonie Employee Association  
 Xcel Energy Foundation  
 Nancy G. Yost\*  
 David R. Yount\*  
 Joseph W. Zeilermeir  
 Arnold F. Zimmerman, Jr.  
 Brenda J. Zwiefelhofer

**GIFT IN KIND**  
 3M  
 Stephen A. Baker  
 Mary Bednarowski  
 Boston's Restaurant & Sports Bar  
 Burger King  
 Cray Inc.  
 Culvers  
 Theresa A. Dehne  
 Sandra Ebbinger  
 Extrusion Dies  
 Fazoli's  
 Ferguson  
 Timothy Figmliner  
 The Fill Inn Station  
 Global Finishing Solutions  
 Gold Cross Ambulance  
 Grengs' Theatres  
 Larry S. Hebert  
 Heyde Companies (Fanny Hill)  
 Honda Power Equipment  
 Larry Konik  
 Ron & Patricia Lange  
 Larson Companies (Green Mill & TGI Friday)  
 Gustave A. Larson Company  
 J.H. Larson Company  
 Lebakken's Inc. of Wisconsin  
 Lincoln Electric  
 Luther Midelfort Clinic  
 McDonald's Restaurant  
 McDonough Manufacturing Co.  
 MegaFoods  
 James A. Michael, DDS  
 Kirk L. Moist  
 National Presto Industries, Inc.  
 Old Country Buffet  
 Tom Pfremer  
 Phillips Plastics  
 Pinnacle Sales, Inc.  
 Premium Waters  
 River Valley Power & Sport  
 State of Wisconsin - Department of Workforce Development  
 StrandVision  
 Sweetwater's Restaurant & Bar  
 Robert D. Thoreson  
 Brian M. Ullman  
 Tom Vanderloop  
 Lisa Walter  
 WIPFLI LLC  
 Wisconsin Hospitality Group (Applebee's)

## Support Local Students

Giving a gift to support students attending CVTC is easy. Call CVTC today to make a difference: 715-833-6479.

June 30, 2009

## ASSETS

Current Assets:	Cash and cash equivalents .....	\$5,874,785
	Accounts receivable .....	480,963
	Property taxes receivable .....	12,525,634
	Federal and state aid receivable .....	1,338,377
	Program and material fees receivable .....	545,810
	Fee arrangements receivable .....	155,227
	Inventories .....	114,765
	Prepaid items .....	41,186
	Debt issuance costs .....	52,437
	<u>Total current assets .....</u>	<u>21,129,184</u>
Non-Current Assets:	Restricted cash and cash equivalents .....	6,065,364
	Debt issuance costs .....	223,028
	Net OPEB obligation .....	29,324
	Capital assets, not depreciated .....	2,601,215
	Capital assets, being depreciated .....	75,090,542
	Less accumulated depreciation .....	(35,375,917)
	<u>Total non-current assets .....</u>	<u>48,633,556</u>
<b>TOTAL ASSETS .....</b>		<b><u>\$69,762,740</u></b>

## LIABILITIES

Current Liabilities:	Accounts payable .....	\$394,398
	Accrued payroll .....	2,867,016
	Accrued compensated absences .....	313,067
	Accrued interest .....	176,912
	Deferred program and material fees .....	13,128
	Due to student organizations .....	670,866
	Current portion of long-term obligations .....	5,165,563
	<u>Total current liabilities .....</u>	<u>9,600,950</u>
Non-Current Liabilities:	Accrued early retirement incentive .....	664,928
	Accrued retiree health insurance premiums .....	-
	General obligation promissory notes .....	16,200,000
	<u>Total non-current liabilities .....</u>	<u>16,864,928</u>
<b>TOTAL LIABILITIES .....</b>		<b><u>26,465,878</u></b>

## NET ASSETS

Invested in capital assets, net of related debt .....	29,041,503
Restricted for debt service .....	1,053,480
Unrestricted .....	13,201,879
<b>TOTAL NET ASSETS .....</b>	<b><u>43,296,862</u></b>
<b>TOTAL LIABILITIES AND NET ASSETS .....</b>	<b><u>\$69,762,740</u></b>



# FOUNDATION FINANCIALS

Foundation Direct Support to Chippewa Valley Technical College  
July 1, 2008 – June 30, 2009

Gift-in-Kind.....	\$145,203
Scholarships.....	\$115,924
Professional Development.....	\$3,943
Program Development: Basic Ed & Employment Skills (Eau Claire County Offender).....	\$40,000
Machine Tool.....	22,873
Dental Hygienist.....	\$20,834
Wood Technics.....	\$2,996
Fire Service.....	\$2,254
Nursing.....	\$600
Special Activities: Scholarship Luncheon.....	\$2,847
Miscellaneous: College Support Services (staff).....	\$50,000
EMT Training.....	\$6,274
Student Emergency.....	\$908
Student Assistantship.....	\$102
<b>TOTAL.....</b>	<b>\$414,758</b>

Combined Balance Sheet – Unaudited						June 30, 2009
	Excellence Fund	Property Management	Innovation Fund	Restricted Fund	Endowment Fund	Total All Funds
Cash All Funds	269,938	-	88,733	859,518	1,171,749	\$2,389,938
Accounts Receivable	2,245	-	39,665	23,285	-	65,195
Prepaid Expenses	5,000	-	-	-	-	5,000
Buildings	-	1,822,538	-	-	-	1,822,538
Accumulated Depreciation	-	(205,036)	-	-	-	(205,036)
<b>Total Assets</b>	<b>277,183</b>	<b>1,617,502</b>	<b>128,398</b>	<b>882,803</b>	<b>1,171,749</b>	<b>\$4,077,635</b>
Accounts Payable	-	-	-	15,000	-	\$15,000
Notes Payable - Anchor Bank	-	491,021	-	-	-	491,021
<b>Total Liabilities</b>	<b>0</b>	<b>491,021</b>	<b>0</b>	<b>15,000</b>	<b>0</b>	<b>\$506,021</b>
<b>Total Fund Balance</b>	<b>277,183</b>	<b>1,126,481</b>	<b>128,398</b>	<b>867,803</b>	<b>1,171,749</b>	<b>\$3,571,614</b>
<b>Total Liabilities and Fund Balance</b>	<b>277,183</b>	<b>1,617,502</b>	<b>128,398</b>	<b>882,803</b>	<b>1,171,749</b>	<b>\$4,077,635</b>

# PROVEN.

Investment

Make a gift by calling:  
715-833-6479

Mail a gift to:  
Chippewa Valley Technical  
College Foundation, Inc.  
620 West Clairemont Ave  
Eau Claire, WI 54701

For more information contact:  
Heidi Fisher, CVTC  
Foundation and Alumni  
Association Director  
715-833-6277  
foundation@cvtc.edu



## WAYS TO GIVE GIFTS

### GIFTS OF CASH

Gifts of cash are the most popular vehicle for supporting the annual fund for Chippewa Valley Technical College's Foundation. Cash contributions are completely tax-deductible and may provide federal and state tax savings. CVTC's annual fund campaign focuses on advancing technology and educational opportunities.

### CORPORATE MATCHING GIFTS

Many companies match dollar-for-dollar the contributions their employees make to not-for-profit organizations. For more information regarding corporate matching gifts, check with your employer or the CVTC Foundation.

### PLANNED GIFTS

Planning a deferred gift to CVTC is a practical way for you to reach your philanthropic goals. A deferred gift is one that is made now that will be received by CVTC in the future. There are many deferred gift opportunities that may realize significant tax savings. These include wills, charitable remainder trusts, charitable lead trusts, charitable and deferred gift annuities, unitrusts, or gifts of life insurance.

### MEMORIALS AND HONORARY GIFTS

Many donors wish to give in memory of a loved one or a special friend. Endowments, scholarships, and equipment purchases are only a few of the memorial and honorary gift opportunities that are available to donors.

### GIFTS OF SECURITIES

These gifts provide the donor with opportunities to lessen capital gains taxes and at the same time make a substantial gift to CVTC.

### GIFTS OF PERSONAL PROPERTY

Personal property is appraised and the donor receives credit for a contribution equal to the full market value of the gift.

### METHODS OF GIVING

Donors have the opportunity to pledge gifts by calling the CVTC Foundation office, sending pledges by mail, or visiting the CVTC website. The CVTC Foundation provides donors with flexible opportunities to give, including:

#### UNRESTRICTED GIFTS

allow CVTC to allocate contributions to the area of the greatest need at the time a gift is given.

#### RESTRICTED GIFTS

are designated for a specific purpose at the time the gift is given.

#### ENDOWMENTS

represent a current or deferred gift of cash, appreciated securities, or other assets that are given in perpetuity for a specific purpose.