



ANNUAL EMPLOYMENT REPORT

SPRING 2024 // [CVTC.EDU](https://cvtc.edu)

DATA COMPILED AND REPORTED BY:

Institutional Planning, Research and Grants

Chippewa Valley Technical College

Business Education Center

620 W Clairemont Ave. // Eau Claire, WI 54701

CHIPPEWA VALLEY
TECHNICAL COLLEGE

CAREER OUTCOMES

2022-2023 GRADUATES

A photograph of three young women, graduates of Chippewa Valley Technical College, smiling and talking at what appears to be a career fair or graduation event. They are wearing name tags. The background shows other people and yellow balloons.

94%

94% of CVTC graduates are employed
within 6 months to a year after graduation.

85% of these graduates are employed
in a field related to their training.

85%

FAST FACTS

94%

EMPLOYED

1,508

RESPONDENTS

85%

EMPLOYED IN
A RELATED FIELD

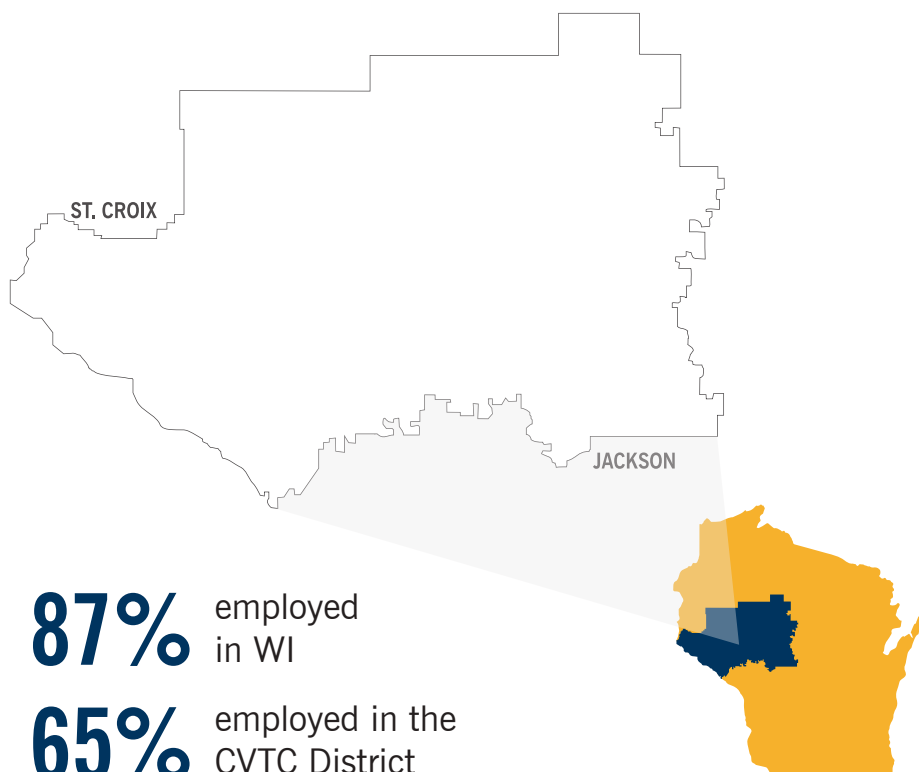
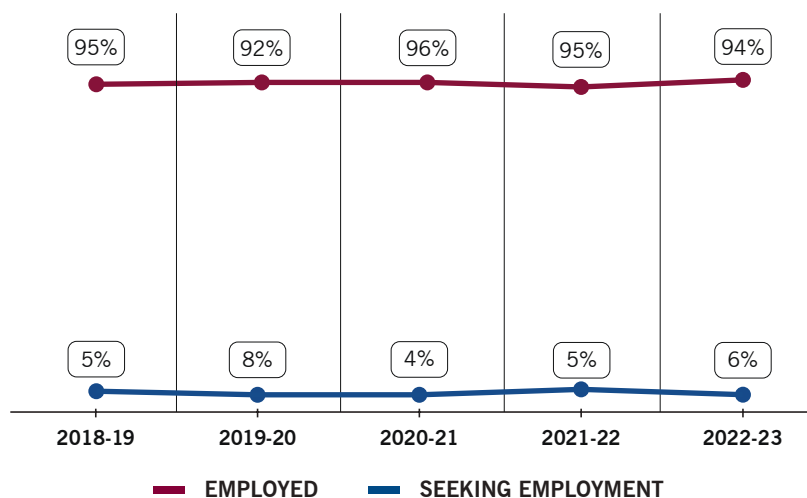
67%

RESPONSE RATE

AVERAGE ANNUAL WAGES BY DEGREE TYPE



GRADUATE EMPLOYMENT TRENDS



2022-23 TOTALS

Total graduates surveyed	2,247
Total graduates responding	1,508
Graduates available for employment	734
Graduates employed	693
Graduates employed in a related field	585
Graduates continuing education	750
Graduates seeking employment	41
Graduates employed in WI	537
Graduates employed in CVTC's district	401



EMPLOYMENT SUMMARY DETAILS

Total Graduates

Total number of students graduating from CVTC in August 2022, December 2022, or May 2023.

Total Graduates Responding

Total graduates completing the survey via online, paper, or phone, or currently enrolled in another CVTC program.

Graduates Available for Employment

Graduates reporting that they are employed (related or unrelated) or seeking employment.

Graduates Employed

Graduates available for employment, reporting that they are employed (related or unrelated).

Graduates Employed in a Related Field

Graduates employed, reporting that they are employed in a field related to their program of study.

Graduates Continuing Education

Graduates who are continuing their education at CVTC or another college

Graduates Seeking Employment

Graduates available for employment, reporting that they are seeking employment.

Graduates Employed in WI

Graduates employed, reporting that they are employed in Wisconsin.

Graduates Employed in CVTC's District

Graduates employed, reporting that they are employed in Buffalo, Chippewa, Clark, Dunn, Eau Claire, Jackson, Pepin, Pierce, St. Croix, Taylor, or Trempealeau counties.

Average Wage Calculation

The 2-year average of salaries reported of graduates (2021-22 and 2022-23) employed in a related field, working 30+ hours per week. To keep wage information confidential, wages are only reported if five or more graduates provided full-time (30+ hours for the purpose of the report), training-related wages.

Survey Methodology

The survey population is comprised of students who graduated during the 2022-23 academic year (August 2022, December 2022, and May 2023). Surveys are sent in the mail, via email, and phone calls are made to non-responders. Responses from the 2022-23 graduates were gathered via Qualtrics survey software and analyzed by the Institutional Planning, Research and Grants office. A total of 1,508 responses were received, an overall response rate of 67%.

AGRICULTURE, FOOD & NATURAL RESOURCES



	GRADUATES	RESPONSE RATE	CONTINUING EDUCATION	SEEKING	EMPLOYED	EMPLOYED RELATED	2-YR AVG HOURLY	2-YR AVG ANNUAL
Agronomy Management	11	82%	11%	0%	100%	75%	\$21.54	\$46,633
Animal Science Management	14	71%	30%	14%	86%	100%	\$19.40	\$41,920
Farm Business & Production Management	5	40%	0%	0%	100%	100%	*	*
Landscape, Plant & Turf Management	10	40%	0%	25%	75%	67%	*	*
Landscape, Plant & Turf Technician	1	100%	100%				*	*
Livestock Technician	12	100%	92%	0%	100%	100%	*	*

**Information not provided due to less than 5 reported wages. Wages reported are a 2-yr. average from 2021-22 & 2022-23 graduates working 30+ hrs. a week and employed in a related field.*

ARCHITECTURE & CONSTRUCTION

	GRADUATES	RESPONSE RATE	CONTINUING EDUCATION	SEEKING	EMPLOYED	EMPLOYED RELATED	2-YR AVG HOURLY	2-YR AVG ANNUAL
Air Conditioning, Heating & Refrigeration (HVAC)	11	45%	0%	0%	100%	100%	\$23.16	\$49,792
Air Conditioning, Heating & Refrigeration (HVAC) Technician	46	65%	60%	8%	92%	100%	\$21.78	\$47,259
Architectural Structural Design	7	86%	0%	0%	100%	100%	\$23.56	\$49,452
Electrical Power Distribution	30	83%	12%	0%	100%	81%	\$28.52	\$65,803
Gas Utility, Construction, & Service	10	100%	0%	0%	100%	100%	\$29.04	\$60,605
Renewable Energy	1	100%	0%	0%	100%	100%	*	*
Residential Construction	21	86%	6%	6%	94%	100%	\$25.11	\$46,107
Residential Construction Management	2	100%	0%	0%	100%	50%	*	*

**Information not provided due to less than 5 reported wages. Wages reported are a 2-yr. average from 2021-22 & 2022-23 graduates working 30+ hrs. a week and employed in a related field.*

BUSINESS, FINANCE, HOSPITALITY & MARKETING



	GRADUATES	RESPONSE RATE	CONTINUING EDUCATION	SEEKING	EMPLOYED	EMPLOYED RELATED	2-YR AVG HOURLY	2-YR AVG ANNUAL
Accounting	24	63%	33%	10%	90%	78%	\$20.35	\$41,991
Accounting Assistant	12	92%	73%	0%	100%	100%	\$21.93	\$44,563
Administrative Professional	7	86%	0%	0%	100%	83%	\$18.94	\$37,593
Baking and Pastry Specialist	8	75%	17%	0%	100%	40%	*	*
Bookkeeper	44	68%	87%	0%	100%	25%	\$20.90	\$42,950
Business Generalist	115	88%	88%	8%	92%	82%	\$26.24	\$56,087
Business Management	88	58%	31%	9%	91%	78%	\$22.10	\$47,263
Culinary Management	2	0%					*	*
Culinary Production Specialist	6	83%	40%	0%	100%	100%	*	*

**Information not provided due to less than 5 reported wages. Wages reported are a 2-yr. average from 2021-22 & 2022-23 graduates working 30+ hrs. a week and employed in a related field.*

BUSINESS, FINANCE, HOSPITALITY & MARKETING (CONT.)

	GRADUATES	RESPONSE RATE	CONTINUING EDUCATION	SEEKING	EMPLOYED	EMPLOYED RELATED	2-YR AVG HOURLY	2-YR AVG ANNUAL
Digital Marketing	12	58%	14%	17%	83%	80%	\$25.03	\$49,574
Entrepreneurship	8	25%	50%	0%	100%	100%	*	*
Graphic Design	28	57%	13%	29%	71%	40%	*	*
Human Resources	18	50%	11%	0%	100%	43%	\$24.16	\$50,285
Individualized Technical Studies	2	50%	0%	0%	100%	0%	*	*
Marketing	6	0%					*	*
Office Assistant	7	29%	100%				*	*
Office Receptionist	7	57%	75%	0%	100%	100%	*	*
Professional Communications	6	33%	50%	0%	100%	100%	*	*
Sales & Marketing Specialist	12	92%	100%				*	*

**Information not provided due to less than 5 reported wages. Wages reported are a 2-yr. average from 2021-22 & 2022-23 graduates working 30+ hrs. a week and employed in a related field.*

HEALTH SCIENCES



	GRADUATES	RESPONSE RATE	CONTINUING EDUCATION	SEEKING	EMPLOYED	EMPLOYED RELATED	2-YR AVG HOURLY	2-YR AVG ANNUAL
Central Service Technician	5	60%	33%	0%	100%	100%	\$17.55	\$33,417
Dental Assistant	19	84%	19%	0%	100%	92%	\$19.56	\$35,487
Dental Hygienist	14	71%	0%	10%	90%	89%	\$37.43	\$65,218
Diagnostic Medical Sonography	15	67%	0%	0%	100%	100%	\$34.86	\$67,474
Health Information Management & Technology	9	100%	0%	0%	100%	67%	\$21.11	\$43,969
Health Navigator	5	60%	33%	0%	100%	50%	*	*
Medical Assistant	35	66%	61%	0%	100%	100%	\$18.44	\$36,291
Medical Coder	8	100%	38%	0%	100%	60%	*	*
Medical Laboratory Technician	13	77%	10%	11%	89%	100%	\$23.40	\$46,302
Nursing	165	51%	15%	0%	100%	97%	\$35.31	\$63,612

**Information not provided due to less than 5 reported wages. Wages reported are a 2-yr. average from 2021-22 & 2022-23 graduates working 30+ hrs. a week and employed in a related field.*

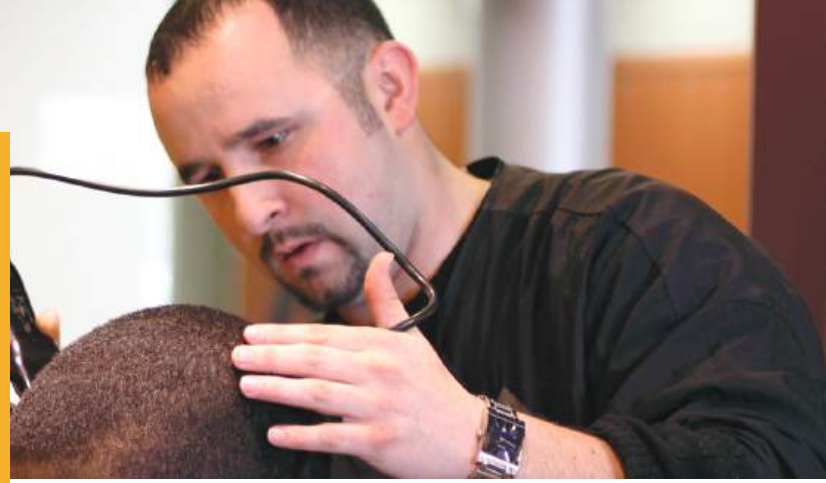
HEALTH SCIENCES (CONT.)



	GRADUATES	RESPONSE RATE	CONTINUING EDUCATION	SEEKING	EMPLOYED	EMPLOYED RELATED	2-YR AVG HOURLY	2-YR AVG ANNUAL
Nursing Assistant	354	68%	74%	15%	85%	73%	\$18.85	\$36,852
Patient Service Specialist	1	100%	100%				*	*
Physical Therapist Assistant	9	67%	0%	17%	83%	80%	\$24.03	\$46,758
Practical Nursing (LPN)	149	94%	91%	0%	100%	92%	\$29.76	\$56,266
Radiography	15	100%	0%	0%	100%	100%	\$30.34	\$52,915
Respiratory Therapy	7	71%	0%	0%	100%	100%	\$35.13	\$67,896
Substance Use Disorder Counseling	10	20%	0%	0%	100%	100%	\$22.85	\$45,179
Surgical Technologist	14	71%	0%	0%	100%	90%	\$26.12	\$49,012

**Information not provided due to less than 5 reported wages. Wages reported are a 2-yr. average from 2021-22 & 2022-23 graduates working 30+ hrs. a week and employed in a related field.*

HUMAN SERVICES & EDUCATION



	GRADUATES	RESPONSE RATE	CONTINUING EDUCATION	SEEKING	EMPLOYED	EMPLOYED RELATED	2-YR AVG HOURLY	2-YR AVG ANNUAL
Autism Assistant	4	50%	100%				*	*
Child Care Services	14	86%	58%	0%	100%	100%	*	*
Cosmetology	24	42%	10%	0%	100%	100%	\$15.09	\$29,085
Early Childhood Education	19	58%	27%	0%	100%	88%	\$15.32	\$29,358
Foundations of Teacher Education	11	73%	13%	14%	86%	100%	\$18.10	\$31,127
Library & Information Services	7	86%	0%	0%	100%	83%	\$19.37	\$36,107
Nail Technician	15	40%	17%	0%	100%	75%	*	*

**Information not provided due to less than 5 reported wages. Wages reported are a 2-yr. average from 2021-22 & 2022-23 graduates working 30+ hrs. a week and employed in a related field.*



INFORMATION TECHNOLOGY

	GRADUATES	RESPONSE RATE	CONTINUING EDUCATION	SEEKING	EMPLOYED	EMPLOYED RELATED	2-YR AVG HOURLY	2-YR AVG ANNUAL
IT - Network Specialist	30	50%	7%	14%	86%	75%	\$23.60	\$48,260
IT - Software Developer	45	40%	33%	18%	82%	44%	\$28.37	\$60,794
IT - Software Development Specialist	72	78%	89%	20%	80%	50%	*	*

**Information not provided due to less than 5 reported wages. Wages reported are a 2-yr. average from 2021-22 & 2022-23 graduates working 30+ hrs. a week and employed in a related field.*

MANUFACTURING

	GRADUATES	RESPONSE RATE	CONTINUING EDUCATION	SEEKING	EMPLOYED	EMPLOYED RELATED	2-YR AVG HOURLY	2-YR AVG ANNUAL
Automation Engineering Technology	16	69%	9%	0%	100%	100%	\$30.12	\$67,991
Electrical Maintenance	19	68%	77%	0%	100%	67%	*	*
Electromechanical Maintenance Technician	8	88%	57%	0%	100%	100%	\$26.28	\$57,382
Machine Tool Operator	7	71%	80%	0%	100%	100%	*	*
Machine Tooling Technics	12	67%	0%	0%	100%	100%	\$23.51	\$51,331
Mechanical Maintenance	9	89%	88%	0%	100%	100%	*	*
Mechatronics Specialist	12	67%	0%	13%	88%	100%	\$31.94	\$70,899
Mechatronics Technician	9	67%	33%	0%	100%	75%	\$27.11	\$61,029
Technical Studies - Journeyworker	6	50%	0%	0%	100%	100%	*	*
Welding	34	53%	44%	0%	100%	90%	\$25.42	\$54,139
Welding Fabrication	2	50%	0%	0%	100%	100%	\$23.25	\$49,154

*Information not provided due to less than 5 reported wages. Wages reported are a 2-yr. average from 2021-22 & 2022-23 graduates working 30+ hrs. a week and employed in a related field.

PUBLIC SAFETY, LAW, CORRECTIONS & SECURITY

	GRADUATES	RESPONSE RATE	CONTINUING EDUCATION	SEEKING	EMPLOYED	EMPLOYED RELATED	2-YR AVG HOURLY	2-YR AVG ANNUAL
Criminal Justice	33	73%	58%	10%	90%	89%	\$23.71	\$50,058
Criminal Justice - Law Enforcement Academy	59	49%	3%	4%	96%	93%	\$28.19	\$60,200
Emergency Medical Technician (EMT)	120	64%	61%	3%	97%	69%	\$19.32	\$39,909
FireMedic	4	25%	0%	0%	100%	100%	\$20.10	\$57,707
Legal Studies/Paralegal	7	86%	0%	17%	83%	80%	\$20.25	\$42,118
Legal Studies/Paralegal Post-Baccalaureate	2	100%	0%	0%	100%	100%	\$22.09	\$42,623
Paramedic	2	100%	0%	0%	100%	100%	*	*
Paramedic Technician	2	50%	0%	0%	100%	100%	\$26.92	\$58,573

**Information not provided due to less than 5 reported wages. Wages reported are a 2-yr. average from 2021-22 & 2022-23 graduates working 30+ hrs. a week and employed in a related field.*

SCIENCE, TECHNOLOGY, ENGINEERING & MATHEMATICS

	GRADUATES	RESPONSE RATE	CONTINUING EDUCATION	SEEKING	EMPLOYED	EMPLOYED RELATED	2-YR AVG HOURLY	2-YR AVG ANNUAL
Design & Drafting Technology	15	93%	93%	100%	0%		*	*
Manufacturing Engineering Technologist	7	57%	25%	0%	100%	100%	\$27.32	\$59,259
Manufacturing Quality	3	100%	33%	0%	100%	100%	*	*
Mechanical CAD Operator	7	86%	0%				*	*
Mechanical Design Technology	6	83%	0%	0%	100%	100%	\$28.47	\$59,777

**Information not provided due to less than 5 reported wages. Wages reported are a 2-yr. average from 2021-22 & 2022-23 graduates working 30+ hrs. a week and employed in a related field.*

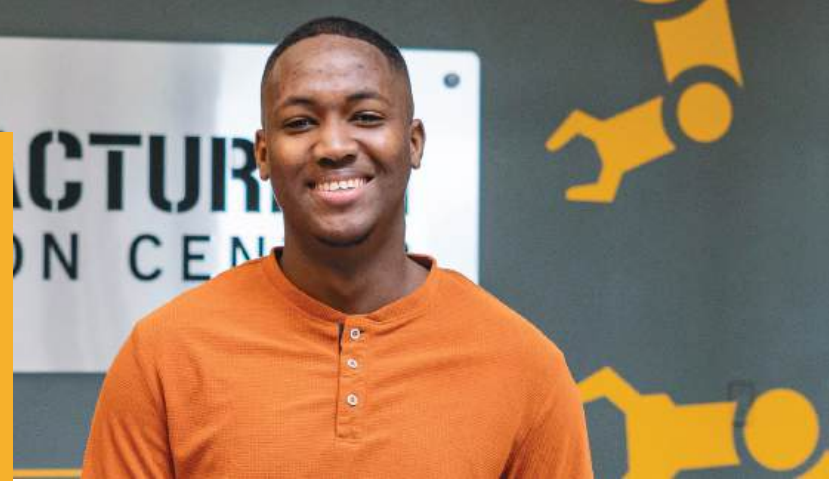
TRANSPORTATION, DISTRIBUTION & LOGISTICS



	GRADUATES	RESPONSE RATE	CONTINUING EDUCATION	SEEKING	EMPLOYED	EMPLOYED RELATED	2-YR AVG HOURLY	2-YR AVG ANNUAL
Auto Collision Repair & Refinish Technician	10	60%	0%	0%	100%	83%	\$21.17	\$47,480
Automotive Maintenance Technician	8	75%	33%	0%	100%	100%	*	*
Automotive Technician	10	60%	0%	0%	100%	83%	*	*
Diesel Truck Technician	15	93%	0%	0%	100%	93%	\$23.08	\$46,042
Motorcycle, Marine & Outdoor Power Products Technician	6	83%	0%	20%	80%	75%	\$20.72	\$41,136
Supply Chain Management	10	60%	0%	0%	100%	83%	\$26.62	\$60,991
Truck Driving	64	41%	12%	0%	100%	82%	\$22.88	\$57,054

**Information not provided due to less than 5 reported wages. Wages reported are a 2-yr. average from 2021-22 & 2022-23 graduates working 30+ hrs. a week and employed in a related field.*

UNIVERSITY TRANSFER



	GRADUATES	RESPONSE RATE	CONTINUING EDUCATION	SEEKING	EMPLOYED	EMPLOYED RELATED	2-YR AVG HOURLY	2-YR AVG ANNUAL
Associate of Arts - Liberal Arts	1	100%	0%	100%	0%		*	*
Associate of Science - Liberal Arts	30	53%	56%	17%	83%	20%	*	*

620

620 students were enrolled in the Associate of Science and Arts Transfer programs in 2022-23. Many of these students will transfer to four-year institutions prior to graduating, which is the ultimate goal.

20%

20% of students who started the Associate of Science and Arts Transfer programs in 2021-22 transferred to a four-year institution the following year. Top institutions these students transferred to:

UW-Eau Claire (43%)

UW-Stout (12%)

**Information not provided due to less than 5 reported wages. Wages reported are a 2-yr. average from 2021-22 & 2022-23 graduates working 30+ hrs. a week and employed in a related field.*

EMPLOYERS HIRING 2022-23 GRADUATES

ACCOUNTING

- Advanced Laser
- Lippert
- Nels Gunderson Chevrolet
- Royal Credit Union
- Tweet Garot

ACCOUNTING ASSISTANT

- AmWest Inc.
- Citizens State Bank

ADMINISTRATIVE PROFESSIONAL

- Markquart Motors
- University of Wisconsin-Stout

AGRONOMY MANAGEMENT

- Northside Elevator
- Peck Valley Dairy
- Seneca Foods
- Trinity Farms LLC

AIR CONDITIONING, HEATING, & REFRIGERATION

- Commercial Plumbing and Heating
- Gustav A Larson
- Poolman
- United Refrigeration Inc.

AIR CONDITIONING, HEATING, & REFRIGERATION TECHNICIAN

- Benedict Refrigeration
- Coolsys
- House of Heating
- Hovland's, Inc.
- Hurlburt Heating & Plumbing
- J.F. Ahern
- Joe's Refrigeration
- Kurth Heating and Cooling
- Malbrit Mechanical
- Next Step Energy

ANIMAL SCIENCE MANAGEMENT

- Mondovi Veterinary Service
- Trinity Farms LLC

ARCHITECTURAL STRUCTURAL DESIGN

- American Structural Metals
- BAA LLC
- Cedar Corporation
- City of Chippewa Falls
- DRL Drafting and Design
- Lynch Mykins Structural Engineers, PC

AUTO COLLISION REPAIR & REFINISH TECHNICIAN

- Caliber Collision
- Eau Galle Body Shop
- Markquart Motors
- Trubilt

AUTOMATION ENGINEERING TECHNOLOGY

- Andersen Corporation
- Bush Brothers & Company
- BW Papersystems
- Catalytic Combustion Corporation
- Custom Fabricating and Repair
- Japs Olson Company
- McMillan Electric Company
- Menards Distribution Center
- Skillwork

AUTOMOTIVE MAINTENANCE TECHNICIAN

- Chippewa Valley Mazda
- D's Auto Repair
- Wisconsin Army National Guard

AUTOMOTIVE TECHNICIAN

- Chippewa Valley Mazda
- One Automotive Group

BAKING AND PASTRY SPECIALIST

- Sam's Club

BOOKKEEPER

- Pinehurst Foods

BUSINESS GENERALIST

- Chippewa Valley Habitat for Humanity
- Kaufhold's Kurds
- Optum Services
- Treasure Island Resort and Casino
- U.S. Bank

BUSINESS MANAGEMENT

- AdventHealth
- Anagram International
- Ashley Furniture
- Drylock Technologies
- Kaufhold's Kurds
- Menards
- Monarch Paving
- Motion Industries
- National Business Institute
- Pierce Pepin Cooperative Services
- Regal Property Manager
- Scheels
- Sunshine Fitness
- Tractor Central
- W.B. Manufacturing

CENTRAL SERVICE TECHNICIAN

- Mayo Clinic Health System

CHILD CARE SERVICES

- Head Start

COSMETOLOGY

- Great Clips
- Primitive Parlor
- Razor Edge
- The Barbershop
- Urban Style

CRIMINAL JUSTICE

- Allied Universal Security Services
- Janesville Police Dept.
- New Richmond Police Dept.
- Per Mar Security Services
- St. Croix County Sheriff's Office

EMPLOYERS HIRING 2022-23 GRADUATES

CRIMINAL JUSTICE-LAW ENFORCEMENT ACADEMY

- Barron Police Dept.
- Boyceville Police Dept.
- Chippewa Falls Police Dept.
- City of Eau Claire
- Durand Police Dept.
- Eau Claire Police Dept.
- Hudson Police
- Kronenewetter Police Dept.
- Lincoln Hills
- Rice Lake Police Dept.
- Shell Lake Police Dept.
- Somerset Police Dept.
- St. Croix County Sheriff's Office
- Stanley-Boyd Police Dept.
- Village of North Hudson

CULINARY PRODUCTION SPECIALIST

- Chippewa Valley Technical College

DENTAL ASSISTANT

- Ashley Dental
- Bullis Pond Dental
- Kristo Orthodontics
- Maple Ridge Dental
- OakPark Dental
- Regis Court Dental Associates

DENTAL HYGIENIST

- Arrowhead Family Dental
- Gentle Dental
- Menomonie Street Dental
- Midwest Dental Oakwood

DIAGNOSTIC MEDICAL SONOGRAPHY

- Aspirus Hospital
- Essentia Health
- Lakeview Hospital
- Mankato Clinic
- Marshfield Clinic Health System
- Mayo Clinic Health System

DIESEL TRUCK TECHNICIAN

- Allstate Peterbilt
- H & S Excavating
- Johnson Tractor
- K & S Logistics & Carriers
- Marten Transport
- Meyer International Trucks
- Northwest Truck Service
- Penske Truck Leasing
- Rands Trucking Inc.
- River States Truck & Trailer
- Wisconsin Kenworth

DIGITAL MARKETING

- Boston FAM
- Hookd Promotions
- Mason Companies

EARLY CHILDHOOD EDUCATION

- Chippewa Falls School District
- Granton Community Childcare Center
- Hand in Hand
- Sonshine Learning Center
- Tiffany Creek Elementary

ELECTRICAL POWER DISTRIBUTION

- A-1 Power
- Black & McDonald
- Hooper
- Jackson Electric Cooperative
- Lake States Construction
- M. J. Electric
- Michels Power
- Olameter
- Push, Inc.
- St. Croix Electric
- Tjader & Highstrom
- Xcel Energy
- Zielies Tree Service

ELECTROMECHANICAL MAINTENANCE TECHNICIAN

- Indue Sales & Service
- McMillan Electric Company
- Ornua Ingredients

EMERGENCY MEDICAL TECHNICIAN

- Allina Health
- Altoona Fire Department
- Arcadia
- Baldwin EMS
- Clearwater Assisted Living
- Dunn County
- Ellsworth Area Ambulance Service
- HSHS Sacred Heart Hospital
- Mayo Clinic Health System
- North Memorial Ambulance Services

ENTREPRENEURSHIP

- St. Croix Chocolate Co.

FIREMEDIC

- Stevens Point Fire Department

FOUNDATIONS OF TEACHER EDUCATION

- Barron Area School District
- Eau Claire Area School District
- School District of Menomonie
- St. Mary's Catholic School

GAS UTILITY CONSTRUCTION & SERVICE

- Q3 Contracting
- Tilson Technology
- We Energies
- Xcel Energy

GRAPHIC DESIGN

- Rice Lake Printery
- River City Stitch

HEALTH INFORMATION MANAGEMENT & TECHNOLOGY

- Mayo Clinic Health System
- OakLeaf Clinics
- Park Nicollet Health Services
- Prevea Health

HUMAN RESOURCES

- Blue Diamond Proppants
- Menards

IT - NETWORK SPECIALIST

- Ag Partners
- Andersen Corporation
- Ellsworth Cooperative Creamery
- IDEXX
- Jackson Electric Cooperative
- Menards
- Northwood Technical College
- WIN Technology

IT - SOFTWARE DEVELOPMENT SPECIALIST

- Documation

IT - SOFTWARE DEVELOPER

- Group Health Cooperative
- MenuMetric
- Pumps Tire

LANDSCAPE, PLANT, & TURF MANAGEMENT

- Lyngblomsten
- Weller Brothers

EMPLOYERS HIRING 2022-23 GRADUATES

LEGAL STUDIES/PARALEGAL

- Bakke Norman, S. C.
- CORRE, Inc.
- Eau Claire County
- Otto Family Law, S.D.

LEGAL STUDIES/PARALEGAL POST-BACCALAUREATE

- Mayo Clinic Health System
- Wisconsin Office of the Public Defender

LIBRARY & INFORMATION SERVICES

- Chippewa Falls Public Library
- City of Rice Lake Library
- Elk Mound School District
- Oshkosh Area School District

LIVESTOCK TECHNICIAN

- Central Star Cooperative

MACHINE TOOL OPERATOR

- Michaud Machining

MACHINE TOOLING TECHNICS

- Baxter Engines
- MRS Machining
- Procise
- Rapid Machining
- Vincent Tool Technologies
- W.S. Darley & Co.

MANUFACTURING ENGINEERING TECHNOLOGIST

- Nova Fire Protection
- Riverside Machine and Engineering

MANUFACTURING QUALITY

- Phillips-Medisize
- Riverside Machine and Engineering

MECHANICAL DESIGN TECHNOLOGY

- D&S Manufacturing
- Spare Time Entertainment
- State of Wisconsin
- Tree Island Steel
- WB Manufacturing

MECHANICAL MAINTENANCE

- Riverside Machine and Engineering

MECHATRONICS SPECIALIST

- 3M
- American Phoenix Inc.
- Midwest Manufacturing
- Nestle Health Science
- Perrigo
- Saputo Cheese USA

MECHATRONICS TECHNICIAN

- Mayo Clinic Health System
- Tenneco
- University of Wisconsin-Eau Claire

MEDICAL ASSISTANT

- Marshfield Clinic Health System
- Mayo Clinic Health System
- OakLeaf Clinics
- OakLeaf Pediatrics

MEDICAL CODER

- OakLeaf Clinics

MEDICAL LABORATORY TECHNICIAN

- HSHS Sacred Heart Hospital
- Krohn Clinic
- Lee Health
- Mayo Clinic Health System
- Spooner Health

MOTORCYCLE, MARINE & OUTDOOR POWER PRODUCTS TECHNICIAN

- Bush Motorsports
- Harbortown Harley Davidson
- Nextgen Powersports

NURSING ASSISTANT

- Augusta Health and Rehab
- Fraser
- Heritage Assisted Living
- HSHS Sacred Heart Hospital
- Hudson Physicians
- Interim HealthCare
- Mayo Clinic Health System
- Meadowbrook
- Western Wisconsin Health

NURSING - ASSOCIATE DEGREE

- Abbot Northwestern Hospital
- Acadia Healthcare
- Allina Health
- Aspirus
- Black River Memorial Hospital
- Carle Bromenn Medical Center
- Carteret Health Care
- Cincinnati Children's Hospital
- Clark County Rehabilitation & Living Center
- HealthPartners
- HSHS Sacred Heart Hospital
- Hudson Hospital
- Huntington Beach Hospital
- Interim HealthCare
- Lakeview Hospital
- Liberty Regional Medical Center
- M Health Fairview
- Woodwinds Hospital
- Marshfield Clinic Health System
- Mayo Clinic Health System
- Minnesota Department of Corrections
- Osceola Medical Center
- Plum City Care Center
- Regions Hospital
- Stillwater Area School District
- Tamarack Health Ashland Medical Center
- TEAM Wellness Corporation

PARAMEDIC

- Eau Claire Fire Department

PARAMEDIC TECHNICIAN

- Mayo Clinic Health System

PHYSICAL THERAPIST ASSISTANT

- Broad River Rehab
- Dove Healthcare
- Interim HealthCare
- PT Solutions

PRACTICAL NURSING

- Baldwin Care Center
- Cambridge Senior Living
- Interim HealthCare
- Mayo Clinic Health System

EMPLOYERS HIRING 2022-23 GRADUATES

PROFESSIONAL COMMUNICATIONS

- Chippewa County

RADIOGRAPHY

- HSHS Sacred Heart Hospital
- HSHS St Joseph's Hospital
- M Health Fairview
- Marshfield Clinic Health System
- Marshfield Medical Center
- Mayo Clinic Health System
- McBride Orthopedic Hospital
- Tamarack Hayward Area Memorial Hospital

RESIDENTIAL CONSTRUCTION

- Anderson Construction
- B & S Remodeling
- Brooks Home Renovations
- C&E Wurzer Builders
- City of Tuscaloosa
- Garage for Geeks
- Kulesa Construction
- Lindus
- Market and Johnson
- Nelson Home Repair
- Norhart
- PCI Roads
- Sandvig Construction

RESPIRATORY THERAPY

- Dove Healthcare - Regional Vent Center
- Mayo Clinic Health System
- Regions Hospital

SUBSTANCE USE DISORDER COUNSELING

- Lutheran Social Services
- St. Croix Correctional Center

SUPPLY CHAIN MANAGEMENT

- Blattner Energy
- Can-Am Integrations
- Red Flint Group LLC
- WOW Logistics

SURGICAL TECHNOLOGIST

- Children's Minnesota
- Marshfield Clinic Health System
- Mayo Clinic Health System
- OakLeaf Surgical Hospital
- Western Wisconsin Health
- Westfields Hospital

TECHNICAL STUDIES - JOURNEYWORKER

- Municipal Electric Utilities of Wisconsin
- WPPI ENERGY

TRUCK DRIVING

- American Materials
- Dirt Brothers Excavating LLC
- G & S Trucking
- Home City Ice
- INT - Galloway
- J Bauer Trucking
- JK Sterry Services LLC
- Johnson Hill Customs
- Kannel Trucking LLC
- Myren's Trucking LLC
- Prochnow Transport
- Q3 Contracting
- River City Transport
- TMC Transportation

WELDING

- Advanced Laser
- GFL Environmental Inc.
- Kraemer North America
- K-TEK Corporation WI
- Local 512 Ironworkers Union
- Wisconsin Metal Fab

WELDING FABRICATION

- Menards Distribution Center



JOB TITLES OF 2022-23 GRADUATES

ACCOUNTING

- Accounting Assistant
- Accounts Payable
- Accounts Receivable
- Member Account Representative
- Project Coordinator

ACCOUNTING ASSISTANT

- Assistant Bookkeeper
- Customer Service Representative

ADMINISTRATIVE PROFESSIONAL

- Administrative Assistant
- Concierge
- Office Administrator

AGRONOMY MANAGEMENT

- Ag Field Supervisor
- Agronomy Grain Operations
- Farmer

ANIMAL SCIENCE MANAGEMENT

- Farm Hand
- Service and Production Manager
- Veterinary Assistant

AIR CONDITIONING, HEATING, & REFRIGERATION

- HVAC Service Technician
- Service Technician
- Territory Manager

AIR CONDITIONING, HEATING, & REFRIGERATION TECHNICIAN

- ACE VAC/Solar Installer
- HVAC Installer
- HVAC Technician
- Refrigeration Service Technician
- Residential HVAC Technician
- Service Sales Intern

ARCHITECTURAL STRUCTURAL DESIGN

- Architectural Drafter
- BIM Technician
- Drafter
- Engineering Technician
- Steel Detailer
- Structural Technician

AUTO COLLISION REPAIR & REFINISH TECHNICIAN

- Autobody Collision Technician
- Autobody Technician
- Body Technician
- Metal Technician

AUTOMATION ENGINEERING TECHNOLOGY

- Automation Specialist
- Automation Technician
- Contract Electrical Technician
- Electrical Designer
- Electro/Mechanical Tech
- Field Service Technician
- Maintenance Technician
- Project Engineer

AUTOMOTIVE MAINTENANCE TECHNICIAN

- Auto Technician
- Lube Technician
- Surface Maintenance Repairer

AUTOMOTIVE TECHNICIAN

- Nissan Technician
- Technician

BAKING AND PASTRY SPECIALIST

- Baker/Packager

BOOKKEEPER

- Manager

BUSINESS GENERALIST

- Client Relationship Consultant
- Laborer
- Slot Shift Manager
- Store Manager

BUSINESS MANAGEMENT

- Account Manager
- Business Support Specialist
- Consumer Access Specialist
- Customer Service Specialist
- Inside Sales
- Manager of Operations
- Member Relations
- Office Manager
- Production Worker
- Property Manager
- Retail Business Analyst
- Specialty Shop Manager

CENTRAL SERVICE TECHNICIAN

- Central Service Technician

CHILD CARE SERVICES

- Teacher Assistant

COSMETOLOGY

- Barber
- Cosmetologist
- Hair Stylist

CRIMINAL JUSTICE

- Deputy Sheriff
- Nuclear Security
- Patrol Officer
- Security Officer

CRIMINAL JUSTICE-LAW ENFORCEMENT ACADEMY

- Correctional Officer
- Lieutenant
- Patrol Officer
- Police Officer

CULINARY PRODUCTION SPECIALIST

- Teaching Fellow

DENTAL ASSISTANT

- Dental Assistant
- Orthodontic Assistant

DENTAL HYGIENIST

- Dental Hygienist

DIAGNOSTIC MEDICAL SONOGRAPHY

- Diagnostic Medical Sonographer
- Sonographer
- Ultrasonographer
- Ultrasound Technician
- Vascular Sonographer

DIESEL TRUCK TECHNICIAN

- Ag Technician
- Diesel Mechanic
- Diesel Technician
- Grease Monkey
- Technician

JOB TITLES OF 2022-23 GRADUATES

DIGITAL MARKETING

- Digital Marketing Expert
- Email Marketing Specialist
- Sales Professional

EARLY CHILDHOOD EDUCATION

- Assistant Teacher
- Infant Teacher
- Special Education Paraprofessional
- Teacher

ELECTRICAL POWER DISTRIBUTION

- CDL Power Groundman
- Equipment Operator
- Lead Meter Tech
- Lineman
- Operator 1
- Overhead Lineman
- Substation Technician
- Tree Trimmer
- Underground Worker
- Utility Helper

ELECTROMECHANICAL MAINTENANCE TECHNICIAN

- Engineering Lab Technician
- Facility Maintenance Technician
- Maintenance

EMERGENCY MEDICAL TECHNICIAN

- Certified Nursing Assistant
- Emergency Medical Technician
- Firefighter/EMT
- Phlebologist
- Telecommunicator I

ENTREPRENEURSHIP

- Chocolatier's Assistant

FIREMEDIC

- Firefighter/Paramedic

FOUNDATIONS OF TEACHER EDUCATION

- ESL 1st Grade Teacher
- Pre-K and K Teacher
- Special Education Para Educator

GAS UTILITY CONSTRUCTION & SERVICE

- CDL Laborer
- Fuser
- Gas Inspector
- Unified Gas Helper
- Graphic Design

GRAPHIC DESIGN

- Graphic Designer
- Screen Print Production Assistant

HEALTH INFORMATION MANAGEMENT & TECHNOLOGY

- Coding Provider Specialist
- Documented Integrity Specialist
- HIM Specialist
- Medical Coder
- Patient Service Representative

HUMAN RESOURCES

- Administrative Assistant
- Human Resources Manager

IT - NETWORK SPECIALIST

- Hardware Support Tech
- IT Administrator
- IT Field Ops Technician Associate
- IT Support Technician
- IT-Network Specialist
- IT-Security Technician
- Network Analyst
- Network Systems Technician
- Technical Support Specialist

IT - SOFTWARE DEVELOPER

- Reporting Developer
- Systems & Software Developer
- Technical Support

IT - SOFTWARE DEVELOPMENT SPECIALIST

- IT Assistant
- Sales Executive

LANDSCAPE, PLANT, & TURF MANAGEMENT

- Grounds Manager
- Horticulturist

LEGAL STUDIES/PARALEGAL

- Judicial Assistant
- Legal Assistant
- Paralegal
- Real Estate Assistant

LEGAL STUDIES/PARALEGAL POST-BACCALAUREATE

- Administrative Assistant
- Paralegal

LIBRARY & INFORMATION SERVICES

- Circulation Assistant
- Information Services Coordinator
- Library Assistant
- Media Assistant

LIVESTOCK TECHNICIAN

- Artificial Inseminations Technician

MACHINE TOOL OPERATOR

- Machinist

MACHINE TOOLING TECHNICS

- CNC Machinist
- Engine Machinist
- Machinist

MANUFACTURING ENGINEERING TECHNOLOGIST

- CAD Designer
- Design Engineer
- Engineering Technician

MANUFACTURING QUALITY

- First Article Inspector
- Quality Technician

MECHANICAL DESIGN TECHNOLOGY

- Amusements Manager
- Analyst
- Data Platform Engineer
- Manufacturing Technician
- Mechanical Technologist

MECHANICAL MAINTENANCE

- Maintenance Technician

JOB TITLES OF 2022-23 GRADUATES

MECHATRONICS SPECIALIST

- Associate Maintenance Planner
- Electrical Tech
- Industrial Maintenance Technician
- Industrial Mechanic
- PLC Technician
- Utilities Maintenance

MECHATRONICS TECHNICIAN

- Electro Mechanic
- Facilities Specialist
- Power Plant Operator

MEDICAL ASSISTANT

- Certified Medical Assistant
- Medical Assistant

MEDICAL CODER

- Billing Rep

MEDICAL LABORATORY TECHNICIAN

- Medical Laboratory Technician

MOTORCYCLE, MARINE & OUTDOOR POWER PRODUCTS TECHNICIAN

- Powersports Technician
- Technician

NURSING ASSISTANT

- Autism Entry Level
- Caregiver
- Certified Nursing Assistant
- Clinical Assistant
- Clinical Care Technician
- Hospice Certified Nursing Assistant
- Operations Director
- Sterilization Technician

NURSING - ASSOCIATE DEGREE

- Healthcare Specialist
- Mental Health RN
- Nurse Technician
- Nursing Supervisor
- Registered Nurse
- Registered Nurse Case Manager

PARAMEDIC

- Paramedic/Firefighter

PARAMEDIC TECHNICIAN

- Paramedic

PHYSICAL THERAPIST ASSISTANT

- Physical Therapist Assistant

PRACTICAL NURSING

- Licensed Practical Nurse
- Regional Clinical Support

PROFESSIONAL COMMUNICATIONS

- Contract Management/Provider Relations

RADIOGRAPHY

- Cardiovascular Invasive Lab Tech
- CT Technologist
- Magnetic Resonance Imaging Technologist
- Mammographer
- Multimodality Imaging Technologist
- Radiologic Technologist

RESIDENTIAL CONSTRUCTION

- Carpenter
- Finish Carpenter
- General Laborer
- Owner
- Property Maintenance Inspector
- Shift Lead
- Siding Technician

RESIDENTIAL CONSTRUCTION MANAGEMENT

- Project Manager

RESPIRATORY THERAPY

- Respiratory Therapist

SUBSTANCE USE DISORDER COUNSELING

- Substance Abuse Counselor
- Treatment Specialist

SUPPLY CHAIN MANAGEMENT

- Buyer
- Operations Coordinator
- Purchaser
- Supply Chain Manager
- Technical Assistant Operations

SURGICAL TECHNOLOGIST

- Certified Surgical Technologist
- Surgical Technologist

TECHNICAL STUDIES - JOURNEYWORKER

- Job Training and Safety Instructor
- Journeyman Lineman

TRUCK DRIVING

- CDL Bulk Milk Hauler
- Driver
- Dump Truck Driver
- Laborer
- Over-the-road Truck Driver
- Ready Mix Driver
- Truck Driver

WELDING

- Ironworker
- Laborer
- Welder
- Welder/Carpenter
- Welder/Fabricator
- Welder/Operator

WELDING FABRICATION

- Welder/Industrial Mechanic



CVTC does not discriminate on the basis of race, color, national origin, sex, disability, or age in employment, admissions, programs, or activities. General inquiries regarding the College's non-discrimination policies may be directed to: Director of Human Resources • Chippewa Valley Technical College • 620 W. Clairmont Ave. • Eau Claire, WI 54701 • 715-852-1377 • WI Relay: 711